



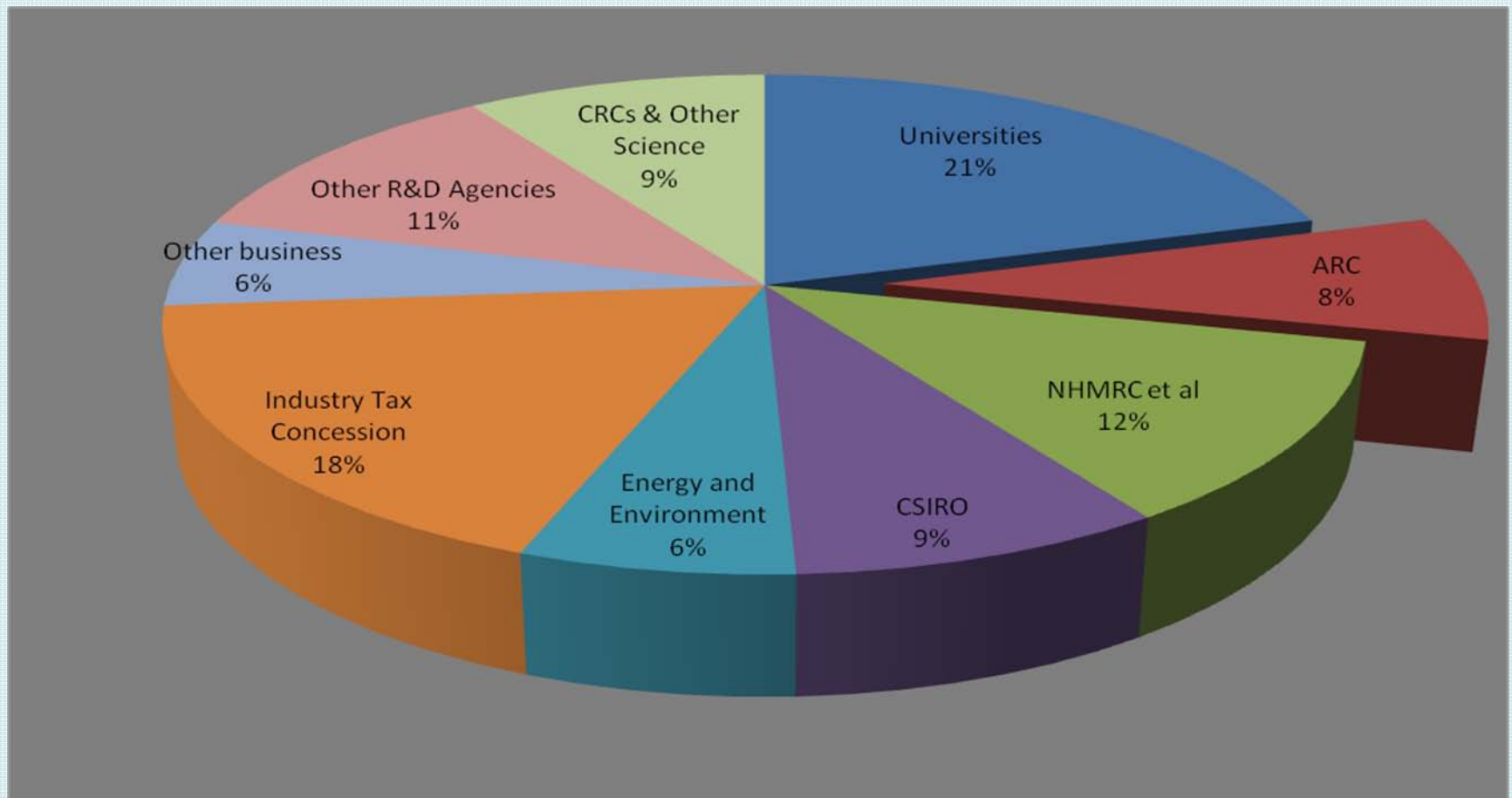
**Australian Government**  
**Australian Research Council**

**International Conference  
on Women in Science and Engineering (WISE)  
Wednesday 23 March 2011**

# *Reaching for Excellence*

**Professor Margaret Sheil  
CEO, Australian Research Council**

# Government Investment in Research 2010-11



- To *support* excellence in *research*
- To *build* Australia's research *capacity*
- To *provide* informed high quality *policy advice* to government
- To *enhance* research outcomes through effective *evaluation*
- To *raise the profile* of Australia's research effort and *be an effective advocate* for its benefits

**National Competitive Grants Program  
\$708M**

**Evaluation  
and Policy**

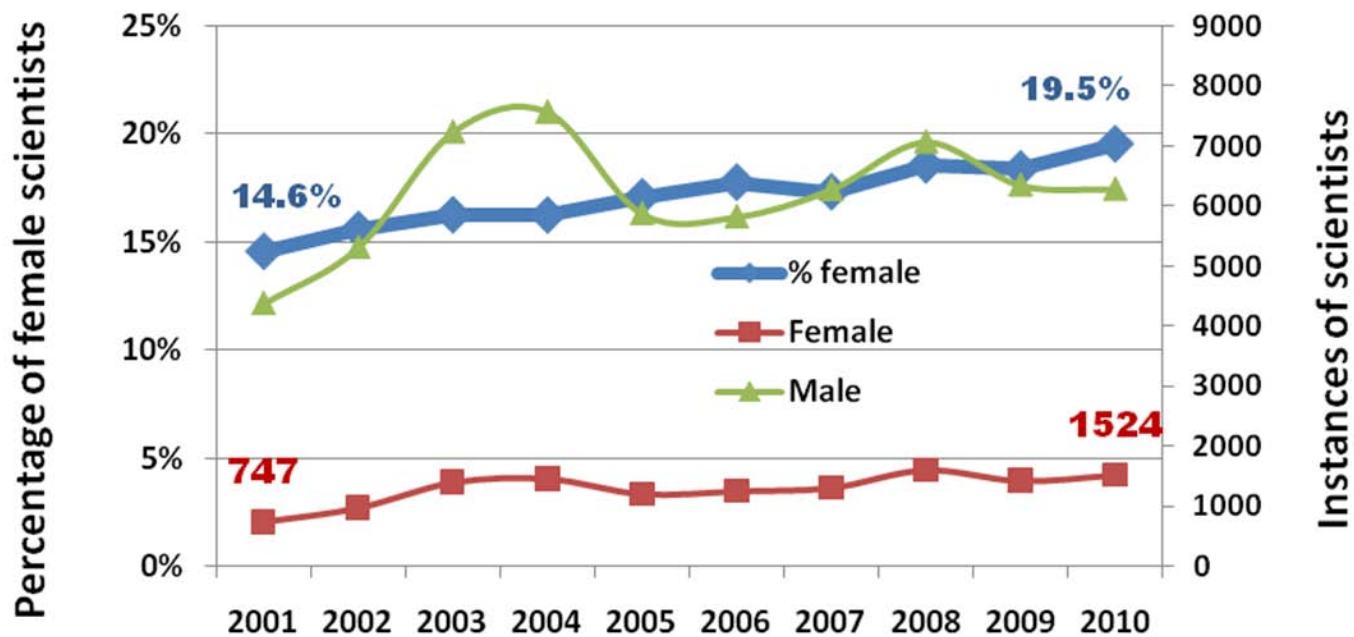
**Discovery &  
Fellowships  
\$423 M**

**Linkage & Centres  
\$285 M**

**Excellence in  
Research for  
Australia**

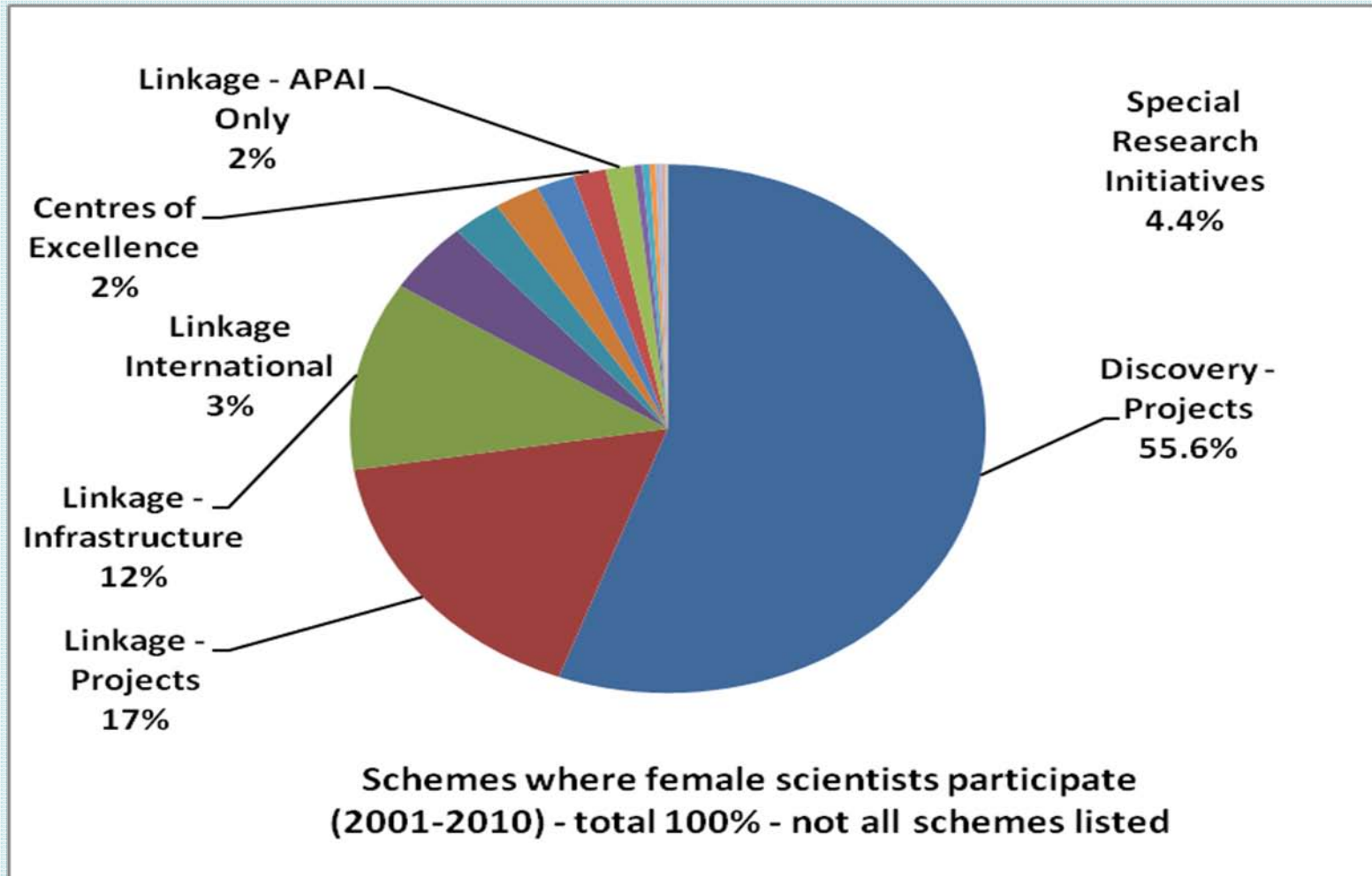
- NCGP funding (2010-11) = \$708,733 million
- \$376 million – Major Grants supporting 1126 innovative projects
- \$255.9 million – 13 new *ARC Centres of Excellence*

# Instances of scientists on submitted proposals (all schemes)

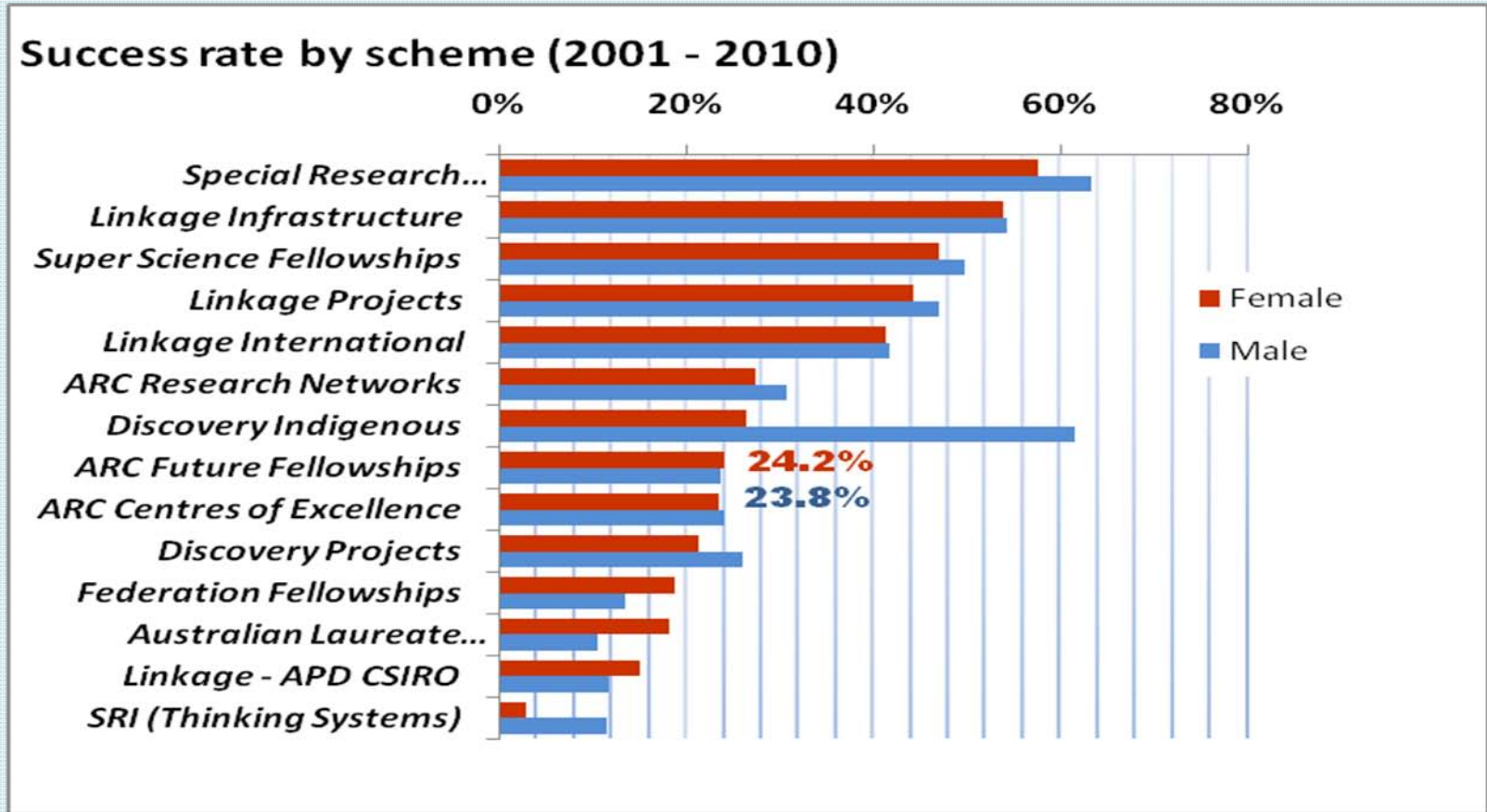


Data for Year 2010 does not include all schemes.

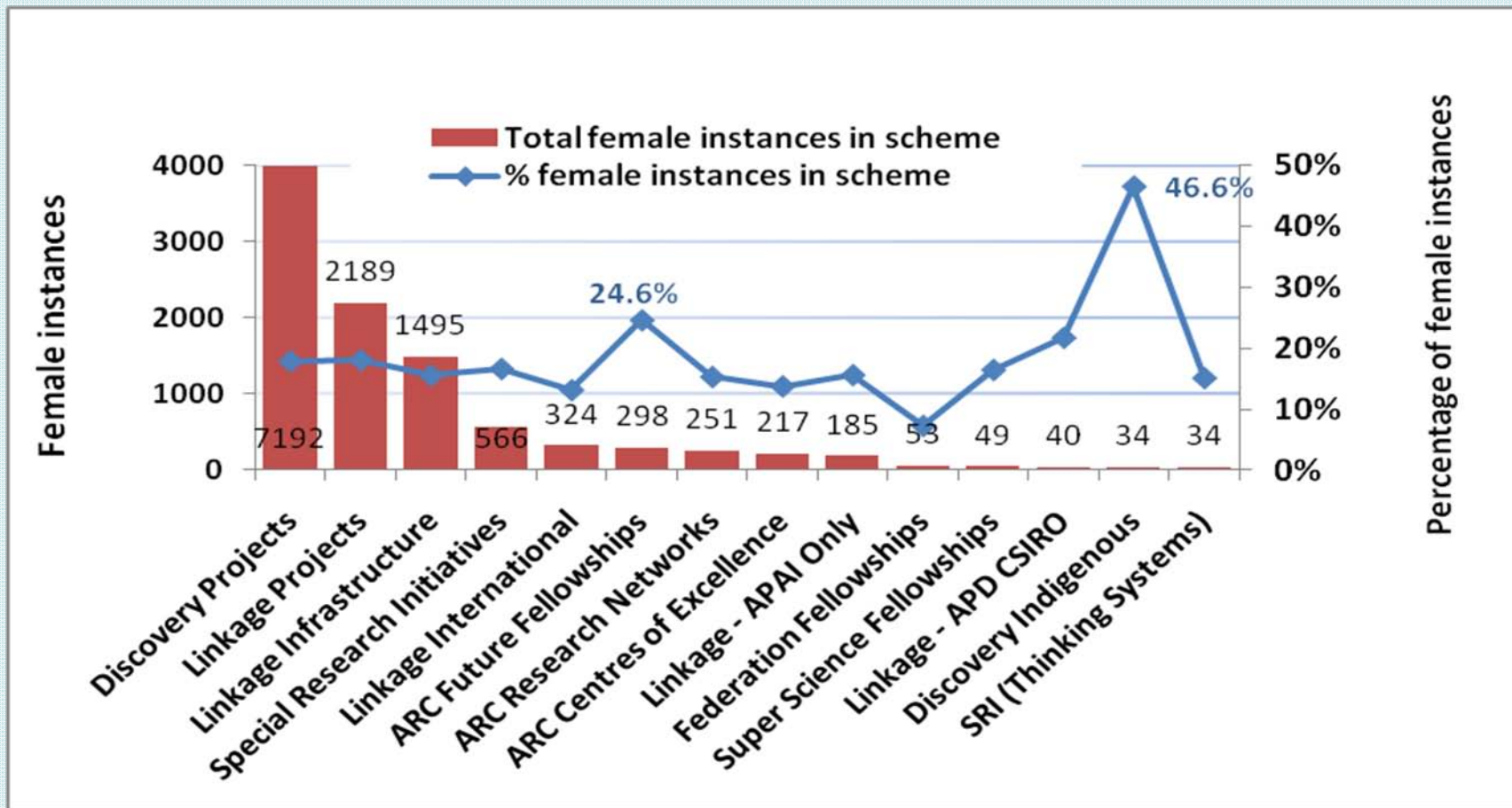
## *Distribution of female scientists by funding scheme (2001-10)*



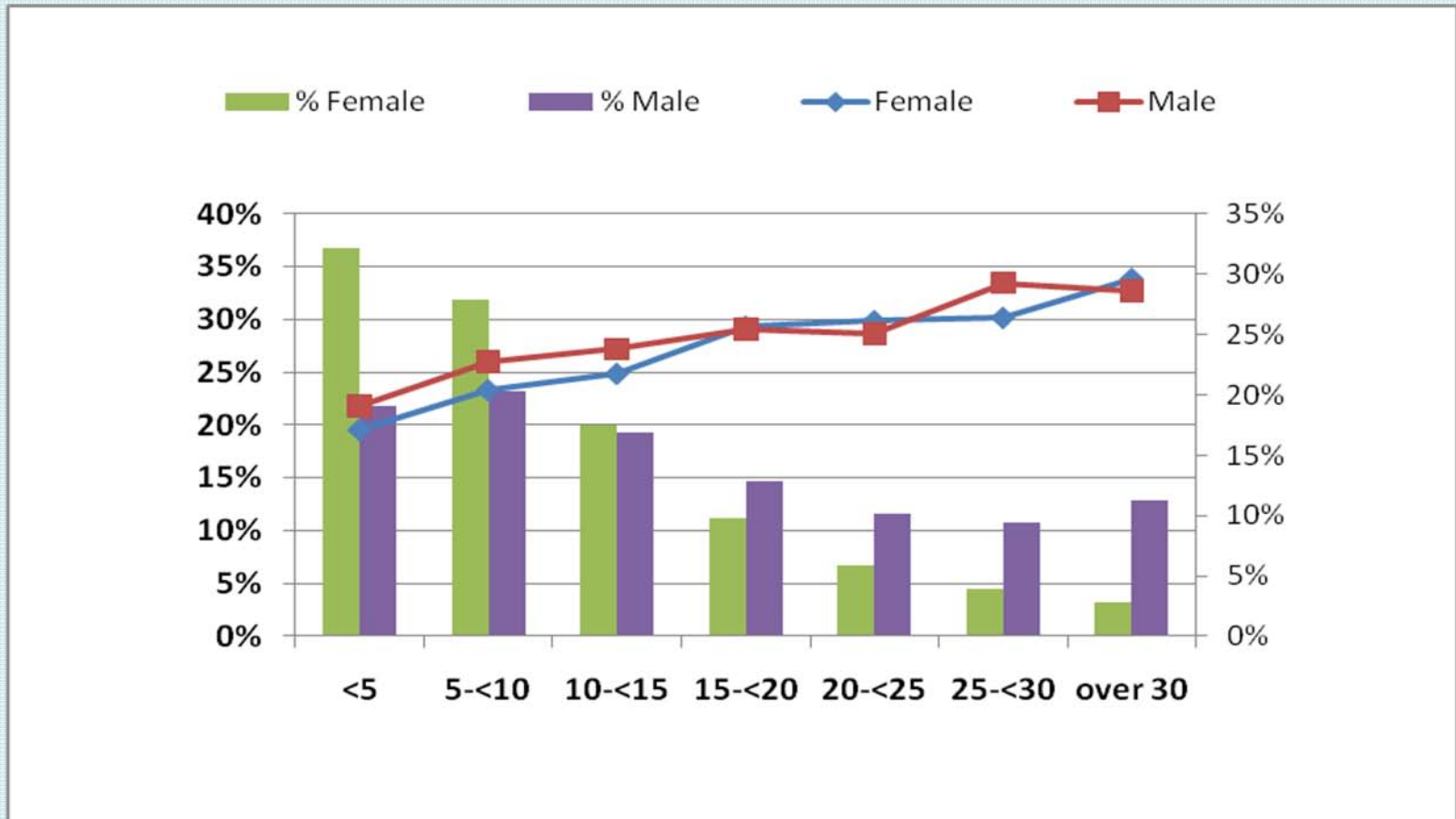
# Success rate of female scientists by funding scheme (2001-10)



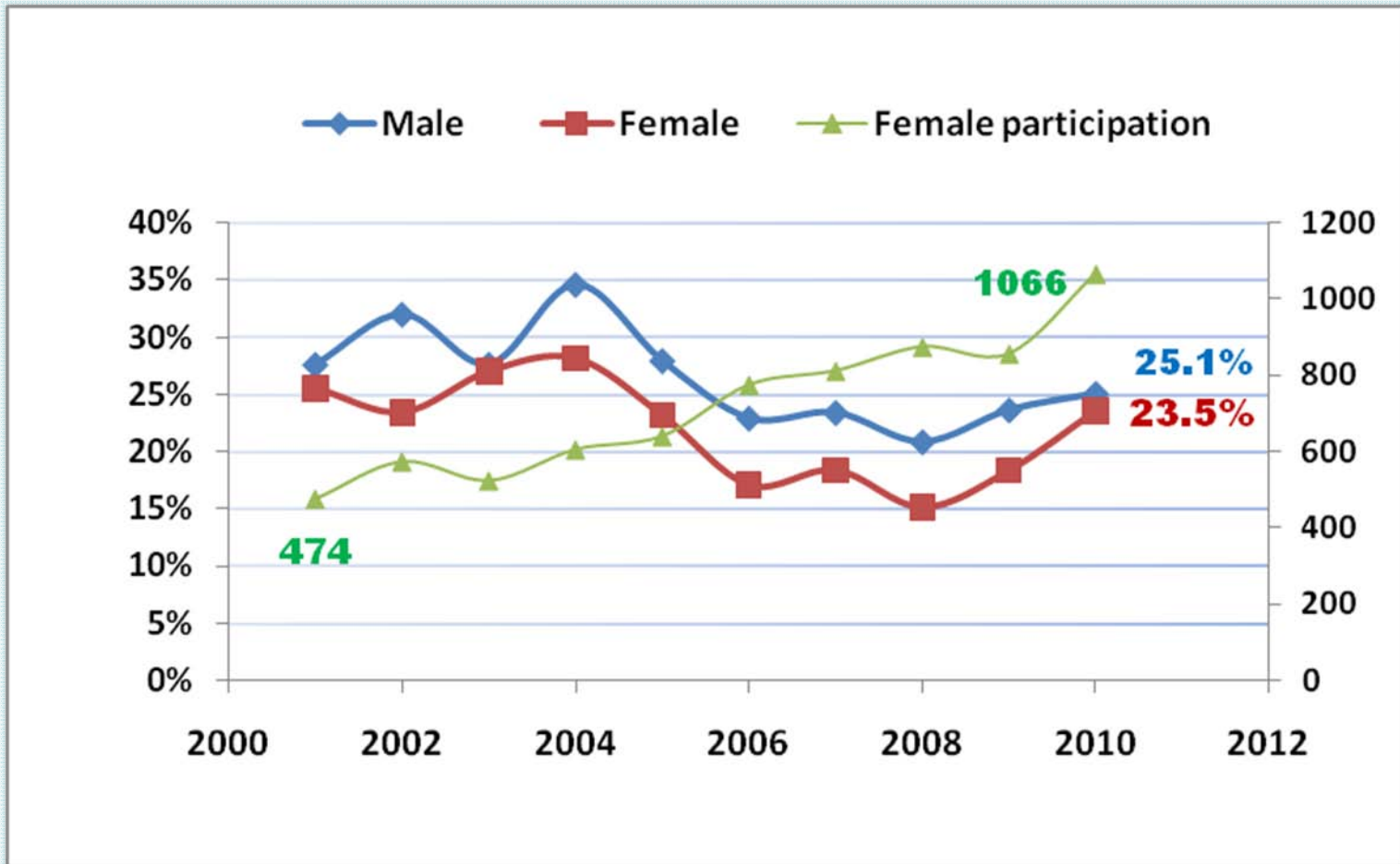
## *Participation of female scientists by funding scheme (2001-10)*



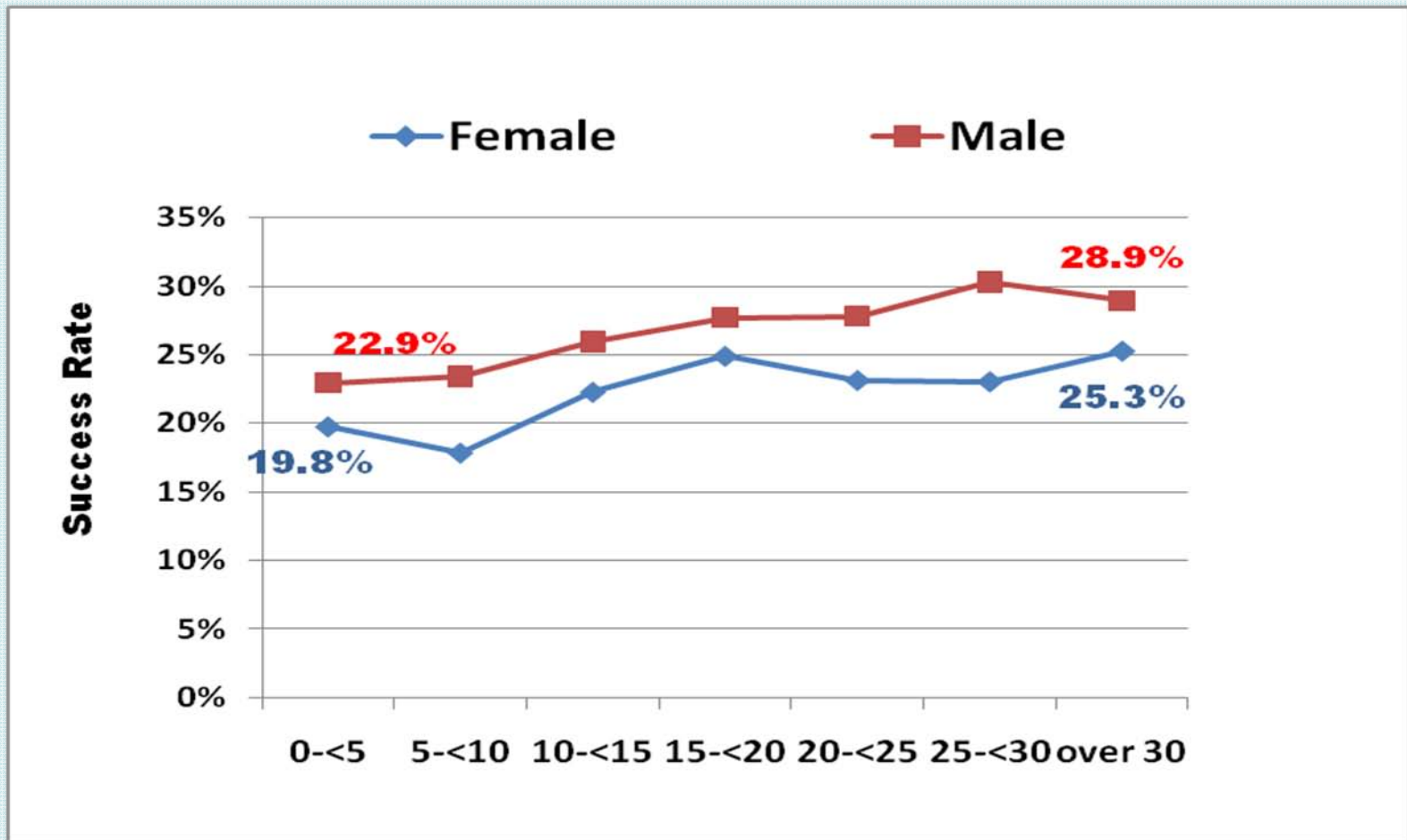
# *Proportion of male and female applicants and corresponding success rates by career age (DPs, 2001-10)*



# Career age and success rate of female scientists (DPs, 2001-10)

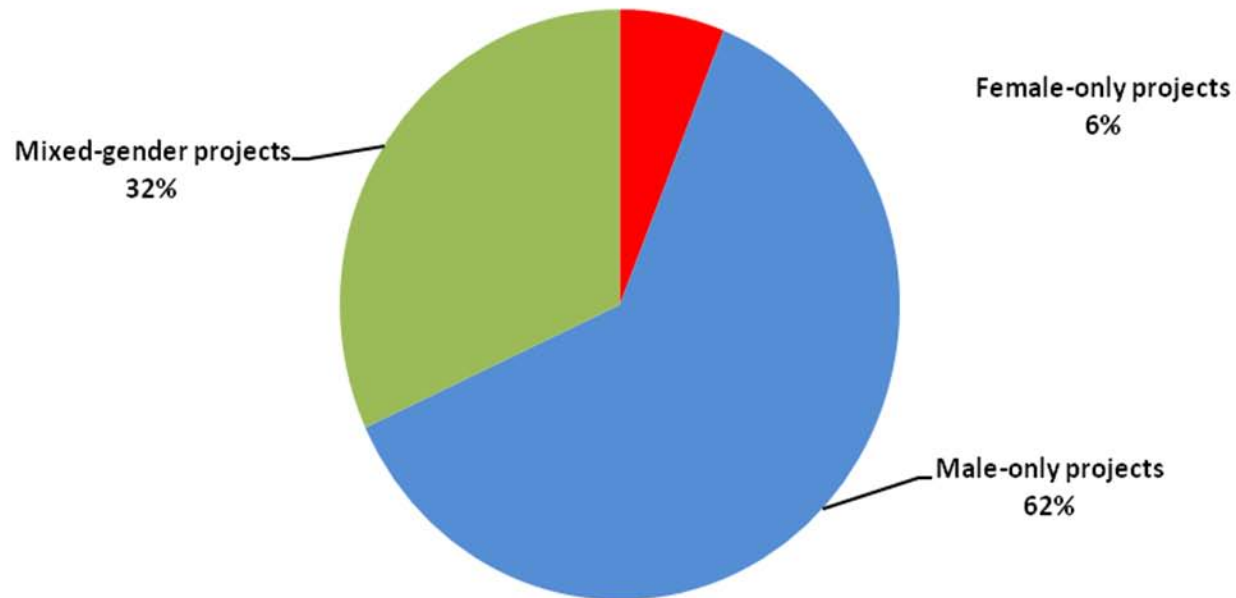


## Career age and success rate of female scientists (DPs, 2001-10)

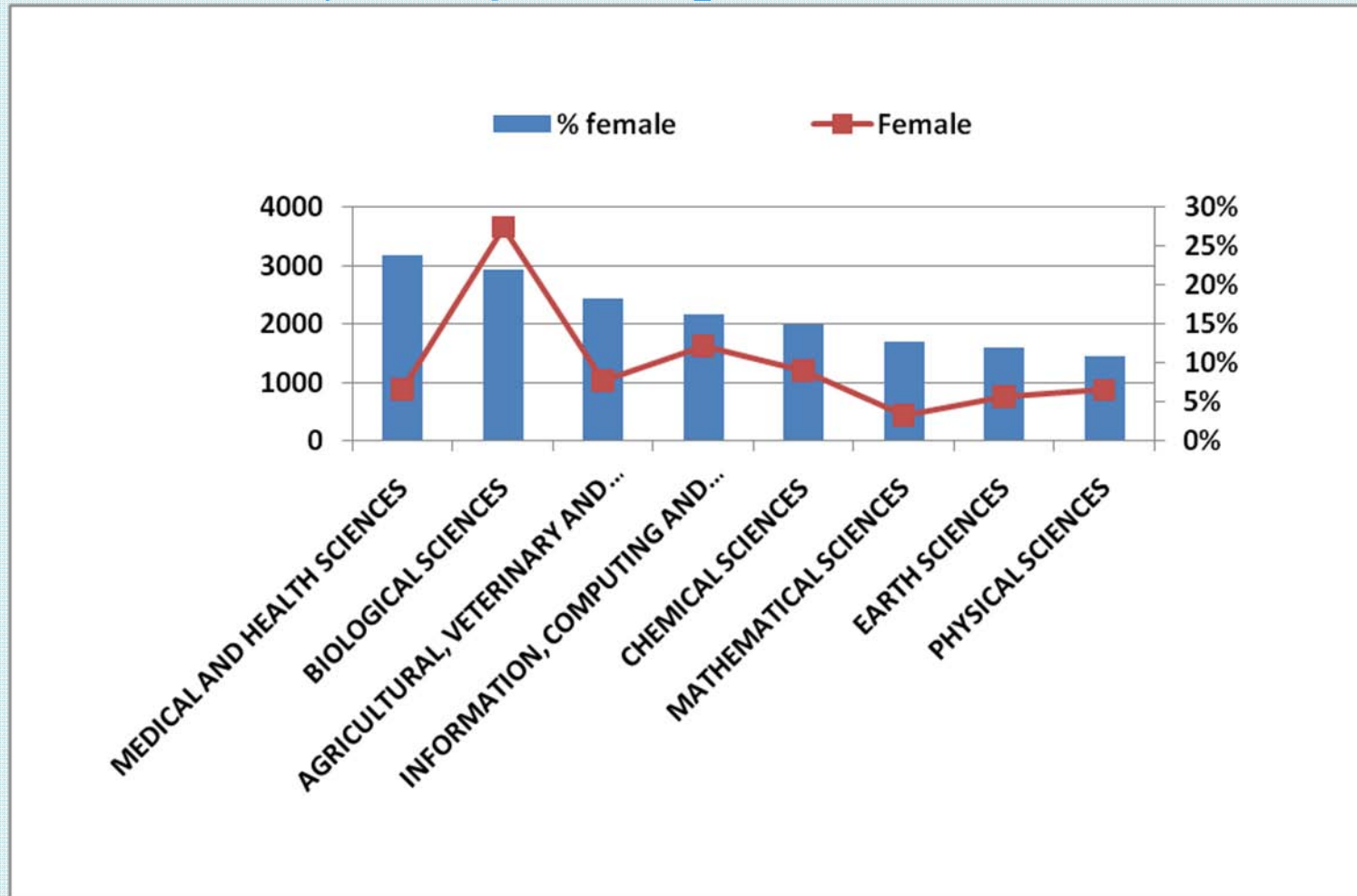


## *Funding split in Sciences by gender (2001-10)*

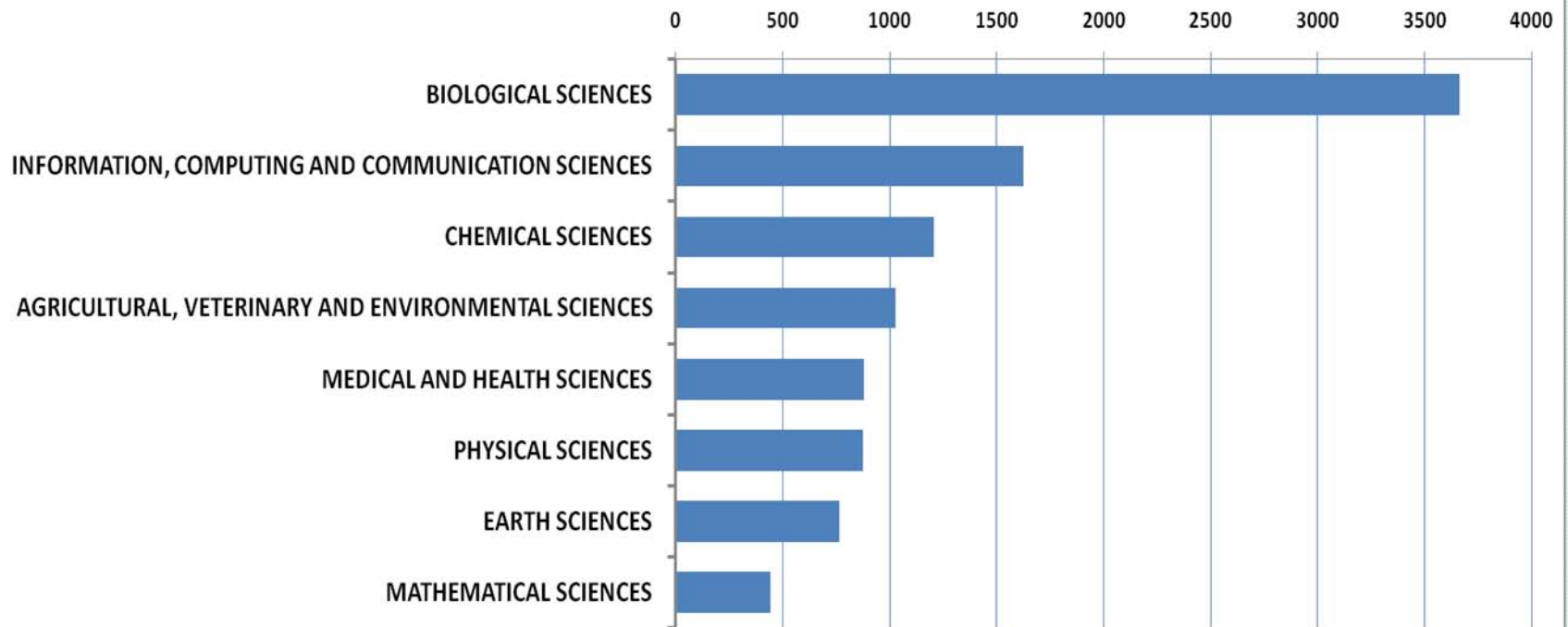
**Funding split in Sciences (2001 - 2010)**



# Percentage of female scientists on funded projects by 2-digit discipline (2001-09)



## *Funding instances for female scientists by 2-digit discipline (2001-09)*



Note - Data is the total instances of funding for female scientists.



***How do we then  
encourage women scientists  
to reach for excellence?***

**Changing language; changing landscape**

**Encouraging opportunity;**  
not simply *providing* it

**Re-enforcing leadership**



# CHANGING LANGUAGE; CHANGING LANDSCAPE

## Research Opportunity and Performance Evidence (ROPE)

- Changing how we measure excellence  
Track record v. Performance evidence
- Assessors take into account any career interruptions, such as:
  - Childbirth
  - Carer's responsibility
  - Misadventure
  - Debilitating illness



# ENCOURAGING OPPORTUNITY

# Encouraging Opportunity

**Career interruptions**

**For ECRs and women  
researchers**

**Options to convert &  
teaching transitions**

## Australian Laureate Fellowships

2x PhD  
2x Post-Doc

17  
5-year  
awards

## Discovery Early Career Researcher Award (DECRA)

\$125,000

200 p.a.  
3-year  
awards

## Researchers in Industry Training Awards

\$30,000

100  
3-year  
awards  
(bi-annual)

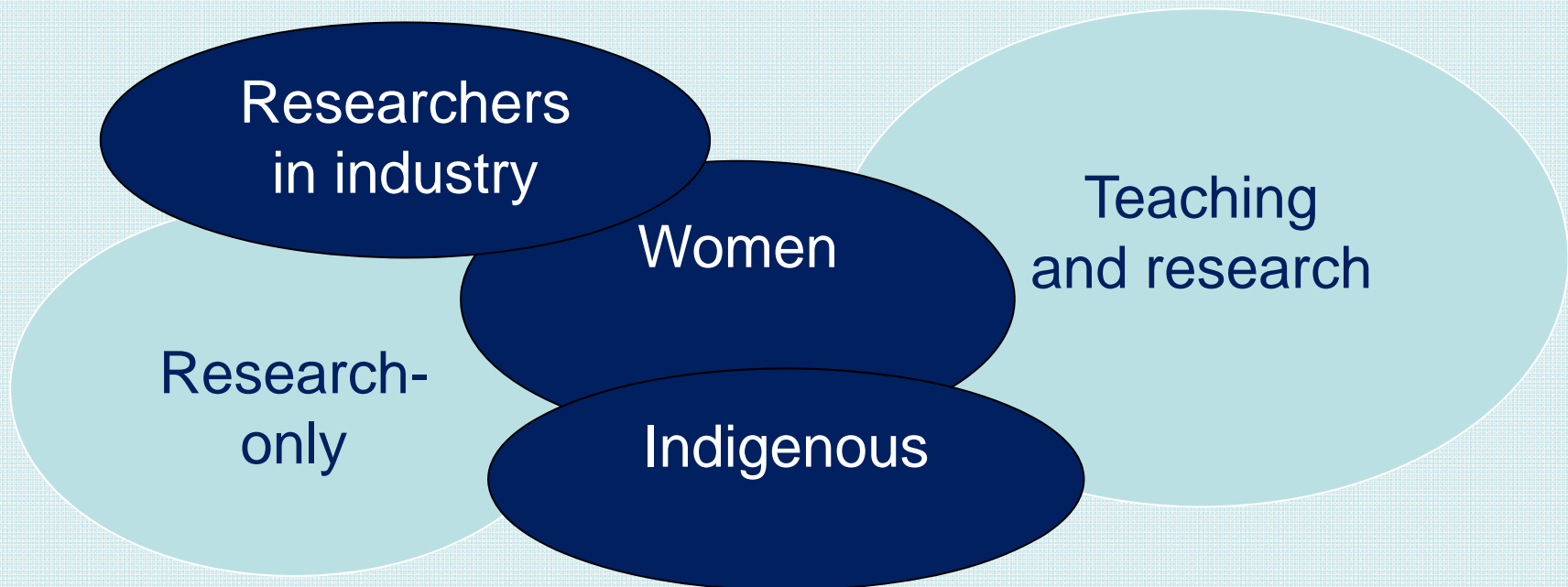
## Future Fellowships

Up to  
\$143,000

200 p.a.  
4-year  
fellowships

## The ARC aims to:

- Provide opportunities for researchers at every career stage
- Foster a range of different cohorts



## The ARC does not:

- Employ researchers directly
- Aim to provide a complete externally funded career structure
- Fund all the excellent research proposals it receives



# RE-ENFORCING LEADERSHIP



# RE-ENFORCING LEADERSHIP

President,  
Academy of Science

**Elizabeth Blackburn, Nobel Laureate**

Chief Executive,  
ARC

Chief Executive, CSIRO

President, FASTS

Chief Executive, ATSE

## ARC Federation and Laureate Fellows

2008

Bernadette  
McSherry

Cheryl  
Praeger

2009

Frances Baum

Tanya Monro

Michelle  
Simmons

2010

Lesley Head

Jennifer  
Martin

2011

Hilary  
Charlesworth

Margaret Jolly

Hanna Kokko

Lorraine  
Mazerolle

## Australian Laureate Fellowships

### FOCUS:

- International repute
- Sustained leadership & mentoring

### OBJECTIVES:

- Attract and retain outstanding research leaders
- Build and strengthen world-class research capability
- Provide excellent research – training environment
- Expand knowledge base
- Forge strong links
- Support research



Kathleen  
Fitzpatrick



Georgina  
Sweet



**Australian Government**  
**Australian Research Council**

*The ARC is committed  
to working with institutions  
to support careers  
in flexible and innovative ways  
in order to maximise opportunities for our talent.*

Professor Margaret Sheil  
**CEO, Australian Research Council**

*Research*