



Australian Government  

---

Australian Research Council

# Excellence in Research for Australia



*ERA 2012*

Southern Cross University

21 November 2011

## Objectives of ERA – that is, what ERA does

- Establish an **evaluation framework** that gives government, industry, business and the wider community assurance of the excellence of research conducted in Australia's institutions;
- Provide a **national stocktake** of discipline-level areas of research strength and areas where there is opportunity for development in Australia's higher education institutions;
- Identify **excellence** across the full spectrum of research performance;
- Identify **emerging research areas** and opportunities for further development;
- Allow for **comparison** of Australia's research nationally and **internationally** for all discipline areas.

# The ERA Unit of Evaluation

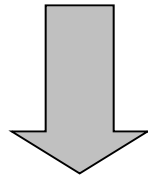
- **Baseline** - the Discipline in an institution = Four-digit Field of Research Code (ANZSRC) e.g.  
**0402 Geochemistry**
- **Higher perspective** – the division in an institution = Two-digit Field of Research Code (ANZSRC) e.g.  
**04 Earth Sciences**
- The ERA Unit is not about the department nor the individual researcher

ERA

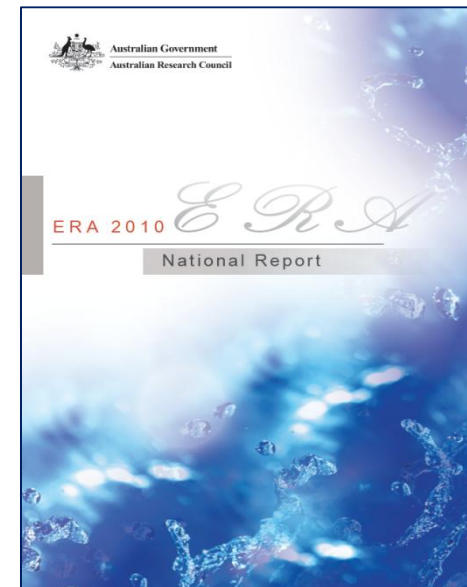
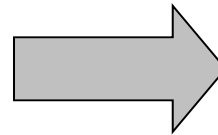
# ERA Process Overview

- Volume and Activity
- Journal Quality
- Citation analysis or peer review
- Research Income
- Applied Measures
- Esteem

**Please note –  
no weightings**



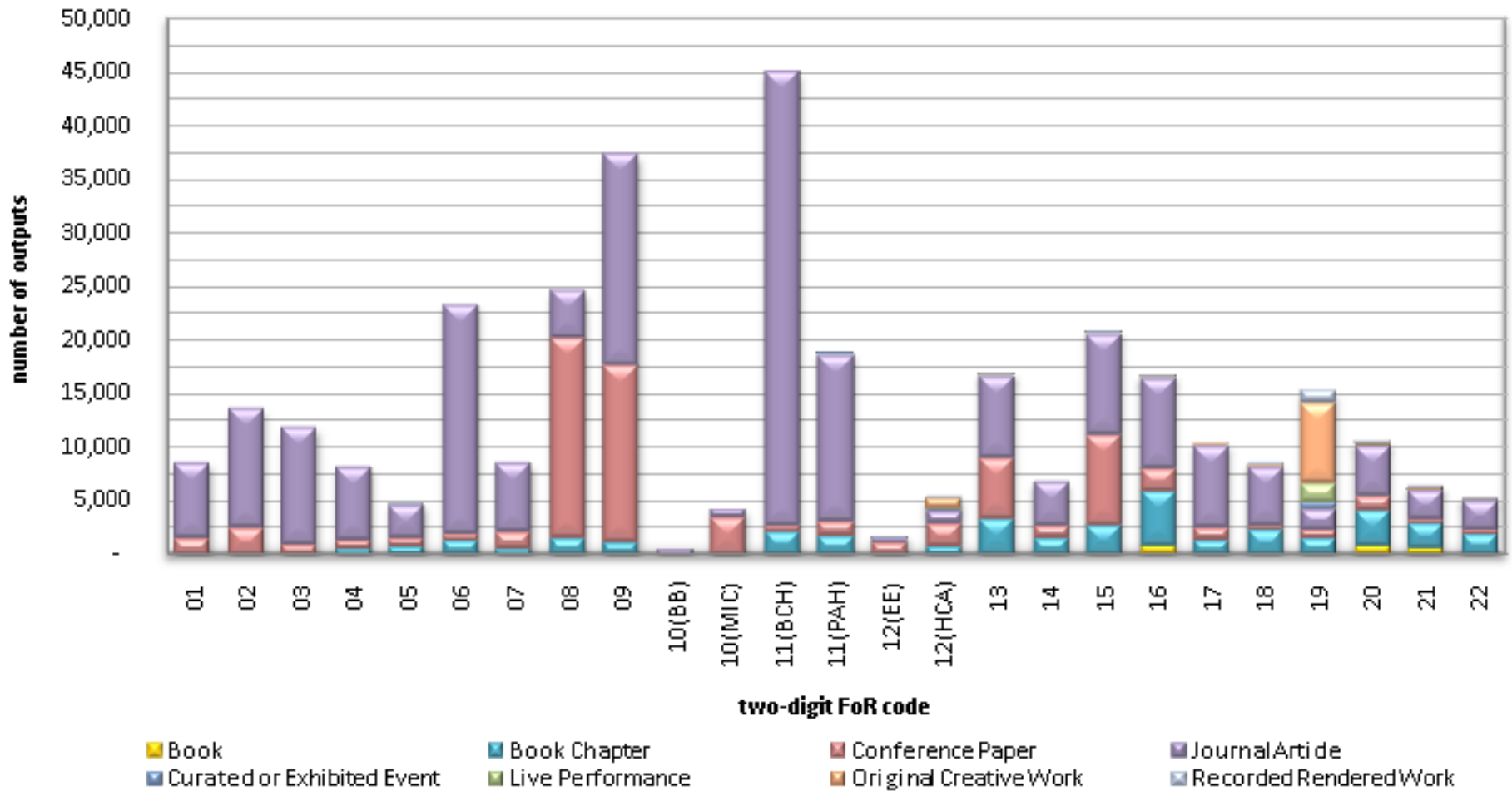
**Research Evaluation  
Committee**



# Scale of ERA 2010

- All 41 eligible institutions submitted data
- Over 330,000 unique research outputs and 55,000 researchers represented
- 2,435 units of evaluation assessed at the two- and four-digit level
- 149 Research Evaluation Committee (REC) members and 500+ Peer Reviewers contributed evaluations
- All aggregated data presented in the *ERA 2010 National Report*.

### Research outputs by two-digit FoR codes by type



## Consultations for ERA 2012

- ERA Public Consultation (March -April 2011) – open consultation on issues including reporting, indicators, eligibility, discipline matrix
- Outreach sessions with institutions and peak bodies
- Detailed feedback from ERA 2010 REC members and peer reviewers
- Feedback from institutions on submission processes
- Comment period on Submission Guidelines and Discipline Matrix (July 2011) and journal list

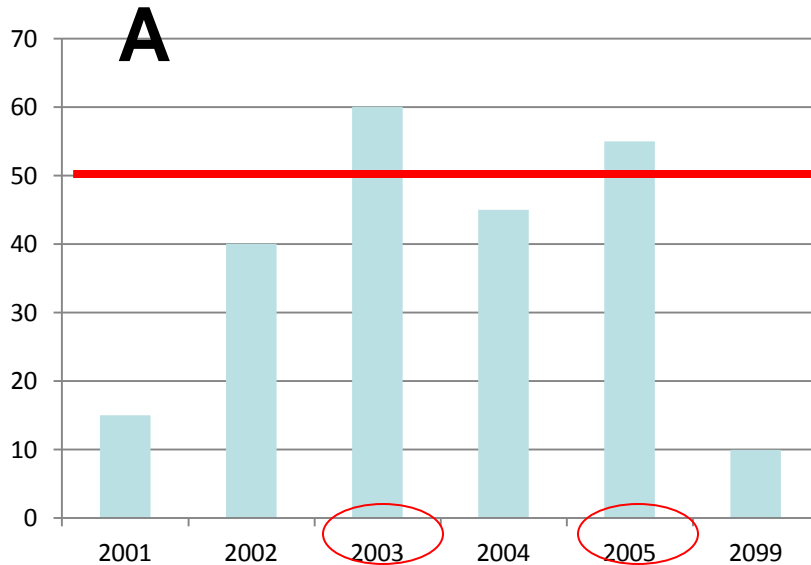
## Refinements for ERA 2012

- Journal articles with  $\geq 66\%$  content in a discipline can be apportioned to that discipline
- Low volume threshold for peer review disciplines raised to 50 apportioned weighted outputs (maintaining 5:1 weighting for books)
- Fractional staff: minimum 40% appointment at ERA census date
- Eligibility of patents, plant breeder's rights and registered designs extended to individuals
- Construction of the pool of outputs for peer review (30%)

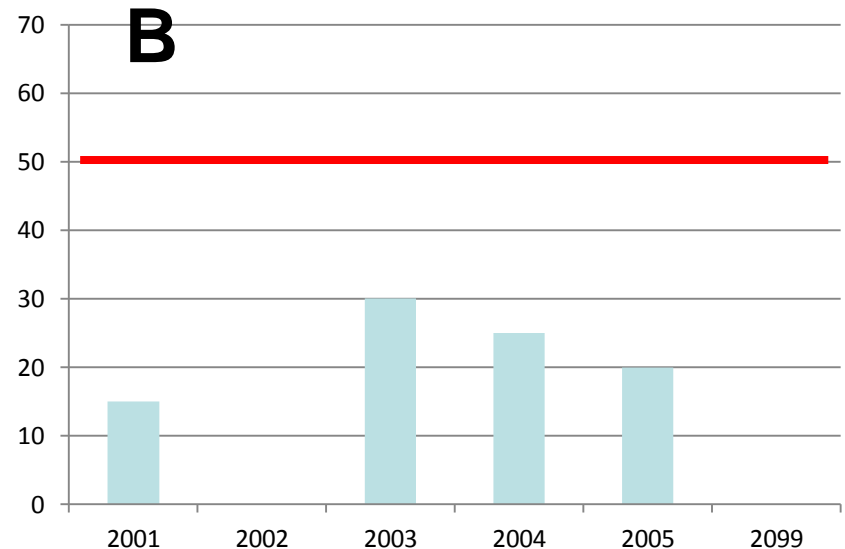
# The refined journal indicator

Example of the draft refined journal indicator for FoR 1801 for University X				
University of X		1801	Law	
	Journal title	Papers	Contribution	Cumulative
1	Journal of Law and Medicine	27	6%	6%
2	Public Law Review	27	6%	12%
3	Australian Journal of Administrative Law	24	5%	17%
4	Law in Context	18	4%	21%
5	Australian Journal of Family Law	15	3%	24%
6	Company and Securities Law Journal	12	3%	26%
7	Torts Law Journal	9	2%	28%
8	Contemporary Issues in Law	9	2%	30%
9	Law and Policy	9	2%	32%
10	International Journal of the Legal Profession	9	2%	34%
11	Australian Journal of Corporate Law	9	2%	36%
12	Australian Journal of Labour Law	9	2%	38%
13	Journal of Judicial Administration	9	2%	40%
14	Federal Law Review	9	2%	42%
15	Australian Journal of Legal Philosophy	6	1%	43%
16	Forensic Science International	6	1%	45%
17	Legal Theory	6	1%	46%
18	Revenue Law Journal	6	1%	47%
19	AIAL National Lecture Series on Administrative Law	6	1%	48%
20	Intertax: international tax review	6	1%	50%
	<b>Total</b>	<b>465</b>		
<i>Please note that this is not based on any university's submission to ERA 2010</i>				

# Low volume scenarios



In both cases, **all outputs** will be assessed at the two-digit level



## ERA 2012 – still to do

- Recruitment of Research Evaluation Committees (Chairs have been announced)
- Expansion of peer reviewer pool
- Submission and beyond

# Further information

- **Web:** [www.arc.gov.au/era](http://www.arc.gov.au/era)
- **Email:** [era@arc.gov.au](mailto:era@arc.gov.au)
- **Hotline:** 02 6287 6755