



The Excellence in Research for Australia (ERA) Initiative

Leanne Harvey
General Manager





ERA will...

Assess research quality within Australia's higher education institutions using a combination of indicators and expert review by committees comprising experienced, internationally-recognised experts





ERA aims to...

Have the confidence of the research community

Identify excellence across all areas of research

Minimise the burden on those making submissions and those doing the evaluations





Clusters

- Physical, Chemical and Earth Sciences (PCE);
- Humanities and Creative Arts (HCA);
- Engineering and Environmental Sciences (EE);
- Social, Behavioural and Economic Sciences (SBE);
- Mathematics, Information and Communication Sciences (MIC);
- Biological Sciences and Biotechnology (BSB);
- Biomedical and Clinical Research (BCR); and
- Public and Allied Health and Health Services (PAHHS).





Decisions made as a result of the consultation

- inclusion of categories 2-4 research income further work on ‘category 5’,
- collection of all ERA data at four-digit FoR,
- attribution of research outputs
- Inclusion of non-salaried staff





ERA/SEER Pilot

Is confined to the Physical, Chemical and Earth Sciences Disciplines (Cluster 1)

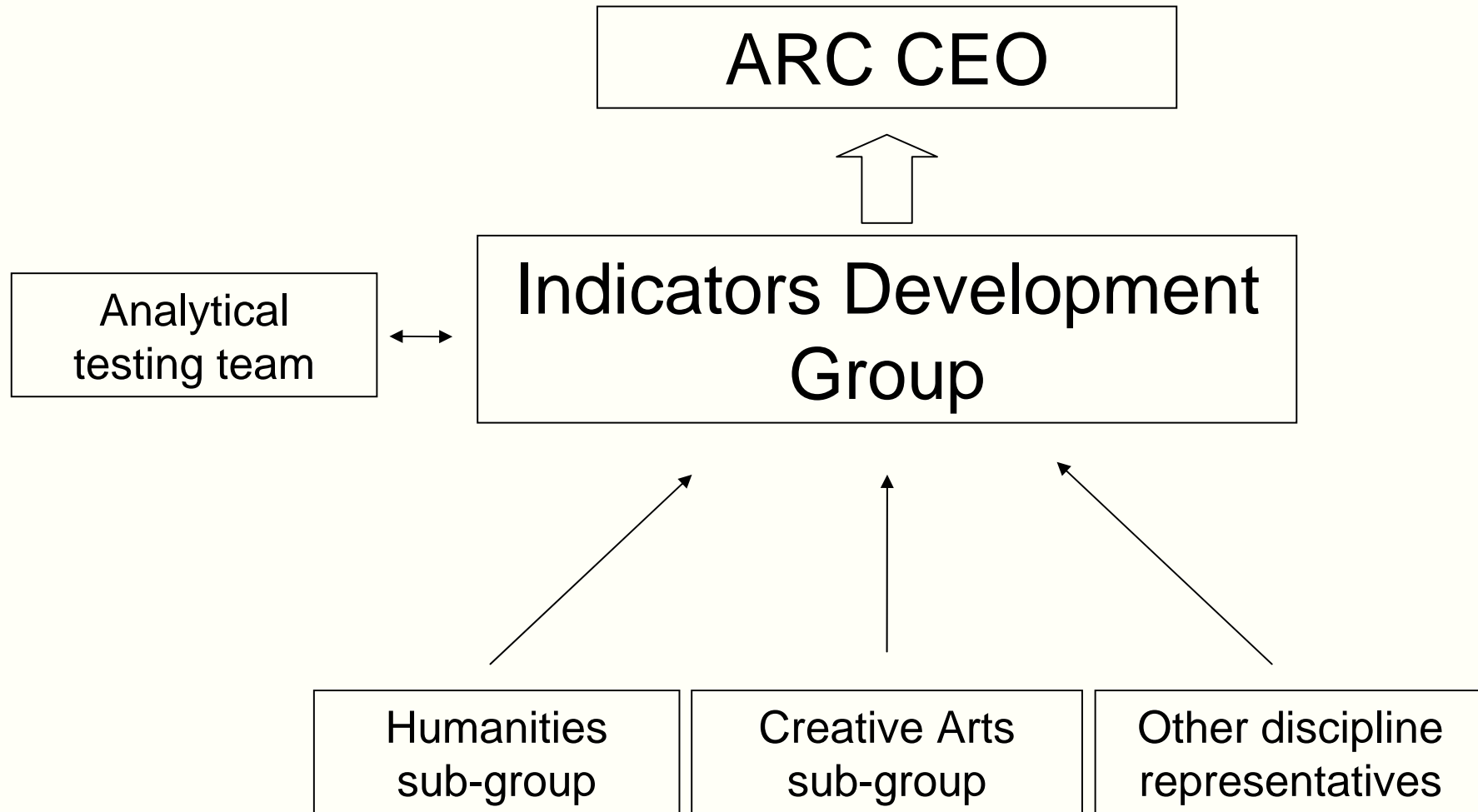
The principles and procedures underlying the Pilot will strongly inform the formal ERA process

Only collecting data from institutions. No analysis will be conducted of data for the Pilot

Using an ARC-developed IT system, known as the System to Evaluate the Excellence of Research (SEER)

Institutions participating in the ERA Pilot are able to submit data from Wednesday 1 October until Friday 14 November 2008







Indicators - proposed approach

ERA will use discipline-specific indicators to assess research where appropriate

One of these indicators is discipline-specific tiered outlet rankings, for which consultation has occurred

Indicator methodologies will be developed in accordance with international best practice

ERA indicator development is guided by the Indicators Development Group (IDG)





Indicators Development Group

Comprises 12 experts to provide advice to the ARC across a range of indicators

Is supported by an analytical testing team, contracted to the ARC, to test various approaches using Australian data

Will make recommendations to the ARC CEO

Will take advice from discipline specific representatives to ensure appropriate indicators are used for each discipline





Indicators Development Group

Name	Institution
Terry Nolan	University of Melbourne
Tony Sheil	Griffith University
Linda Butler	Analytical Support Team
Ken Richardson	University of Queensland
Patty Solomon	University of Adelaide
Marcus Nichol	NHMRC
Paula Callan	Queensland University of Technology
Tim Yapp	CSIRO
Jonathan Adams	Evidence UK
Paul Hubbard	HEFCE
Anthony van Raan	Leiden University
Max King	Monash University





Indicator principles

Multiple citation suppliers

Accrediting an output to an institution

Interdisciplinary research outputs

Reference period

Where to use expert review

Combining indicator profiles to derive an overall 'Excellence Profile'





Indicator matrix example

	discipline 1	discipline 2	discipline 3	discipline 4	discipline 5	discipline 6	discipline 7	discipline 8	discipline 9	discipline 10	discipline 11	discipline 12	discipline 13	discipline 14
Ranked Journals	■	■	■	■	■	■	■	■	■	■	■	■	■	■
Ranked Publishers											■	■	■	■
Ranked Conferences				■		■			■					
Ranked Curated Events											■	■	■	■
Citation Analysis	■	■	■	■	■	■	■		■	■				
Research Income	■	■	■	■	■	■	■	■	■	■	■	■	■	■
Patents				■	■									
Plant Breeders Rights					■									
Peer Review							■	■			■	■	■	■





Humanities sub-group

Name	Institution
Stuart Macintyre (Chair)	University of Melbourne
Tim Murray	La Trobe University
Moira Gatens	University of Sydney
Cheryl Saunders	University of Melbourne
Graeme Turner	University of Queensland
Margaret Harris	University of Sydney
John Byron	Academy of the Humanities
Cliff Goddard	University of New England





Creative Arts sub-group

Name	Institution
Margaret Seares	University of Western Australia
Desley Luscombe	University of Technology, Sydney
Su Baker	University of Melbourne
Dennis Del Favero	University of New South Wales
Huib Schippers	Griffith University
Ann Stephen	Powerhouse Museum

