



Australian Government
Australian Research Council

Opportunities for International Partnerships Australian Research Council Initiatives

FOCSA

2nd Australia-China Symposium
October 17th, 2008

Dr Ian D R Mackinnon

Executive Director, Engineering and Environmental Sciences
Australian Research Council

Co-ordinator: Linkage Projects and Linkage Infrastructure, Equipment and Facilities Schemes
email: ian.mackinnon@arc.gov.au





Ministry Structure



Minister for Innovation, Industry, Science and Research

Senator Kim Carr

Department of Innovation,
Industry, Science & Research

Australian
Research Council

CSIRO

International
Science Linkages

Cooperative
Research Centres

Other Agencies/Offices

AIMS

ANSTO

AAO

Chief Scientist



Australian Research Council Overview

- Federal Government agency supporting all R&D
 - except medical and dental research
 - competitive, peer-reviewed proposals by investigators
 - limited strategic direction in specific fields
- Annual funding to University sector ~\$600m (FY08/09)
 - about 10% of total Federal spend on R&D
 - increase from ~\$250m in FY02/03
 - by FY10/11 will increase to ~\$750m/yr
 - assess >5,500 proposals per year
 - 35 Centres of Excellence, Special or Co-funded Centres
 - 25 Research Networks
- Mission
 - to advance Australia's research excellence to be globally competitive and to deliver benefits – public good and commercial – to the community

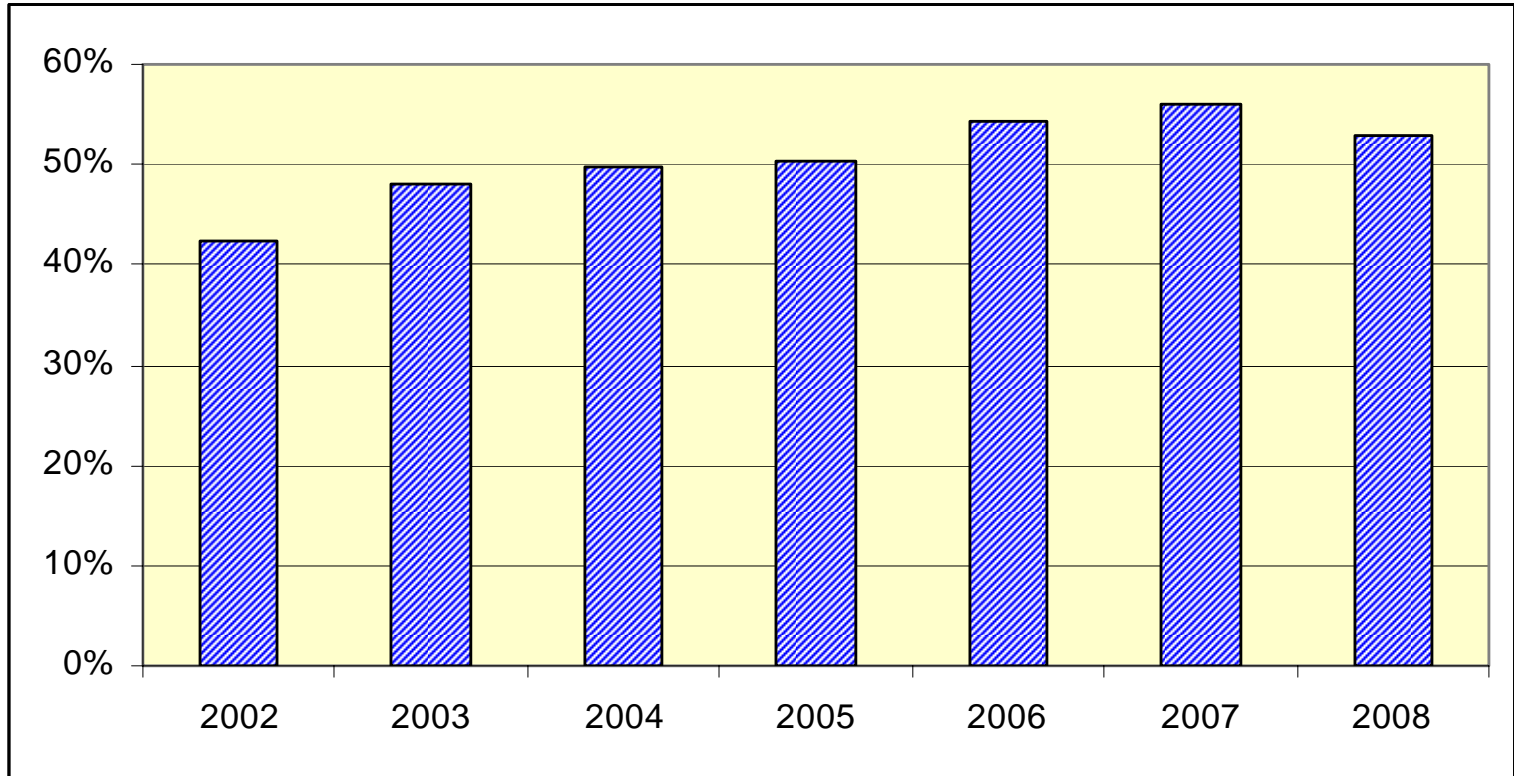




ARC Funded Projects

Proportion with International Collaboration

2002-2008



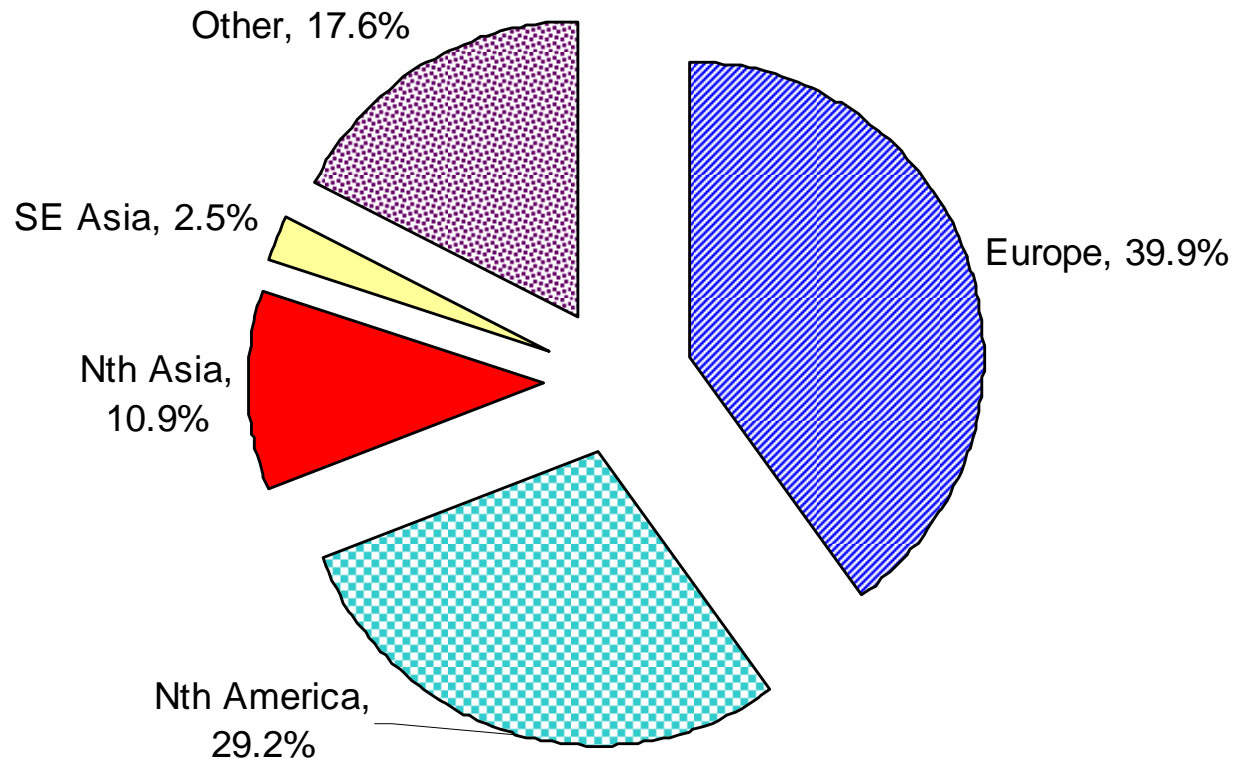
700 to 800 projects per year propose international collaboration





ARC Funded Projects

Distribution of International Collaboration 2002-2008

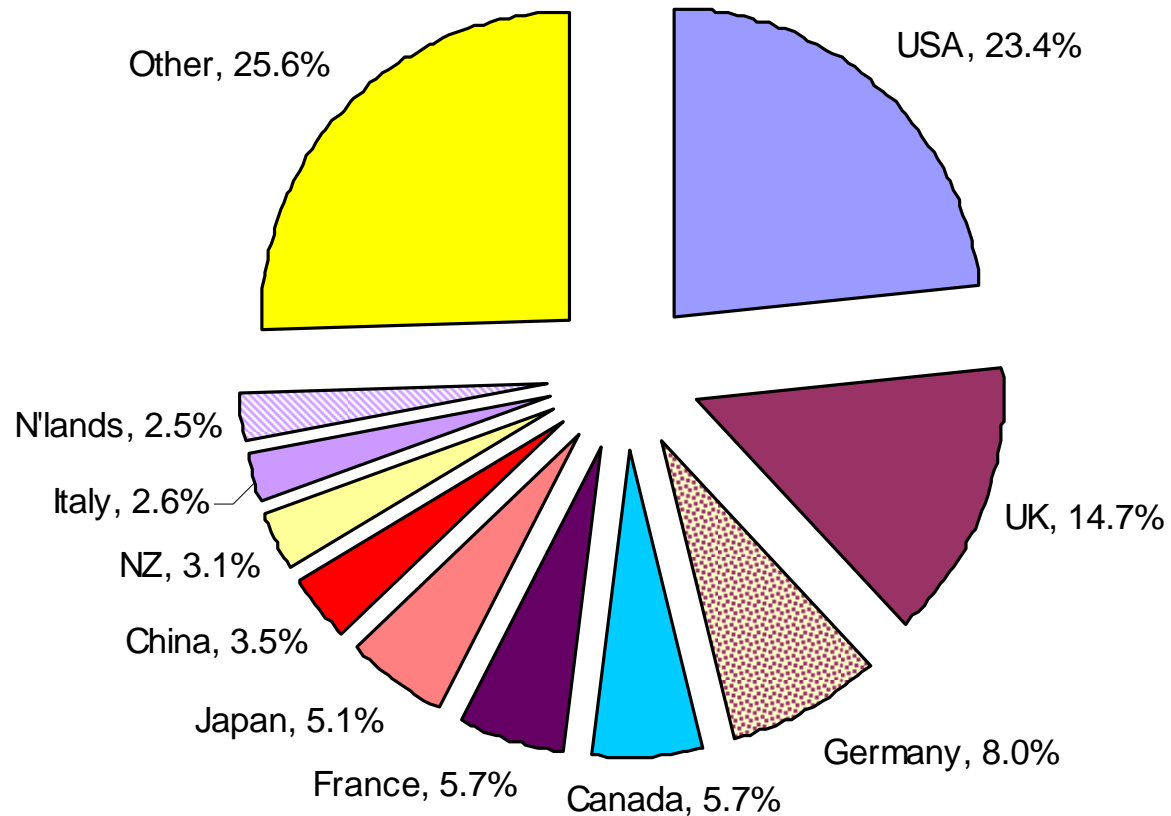




ARC Funded Projects

Distribution of International Collaboration

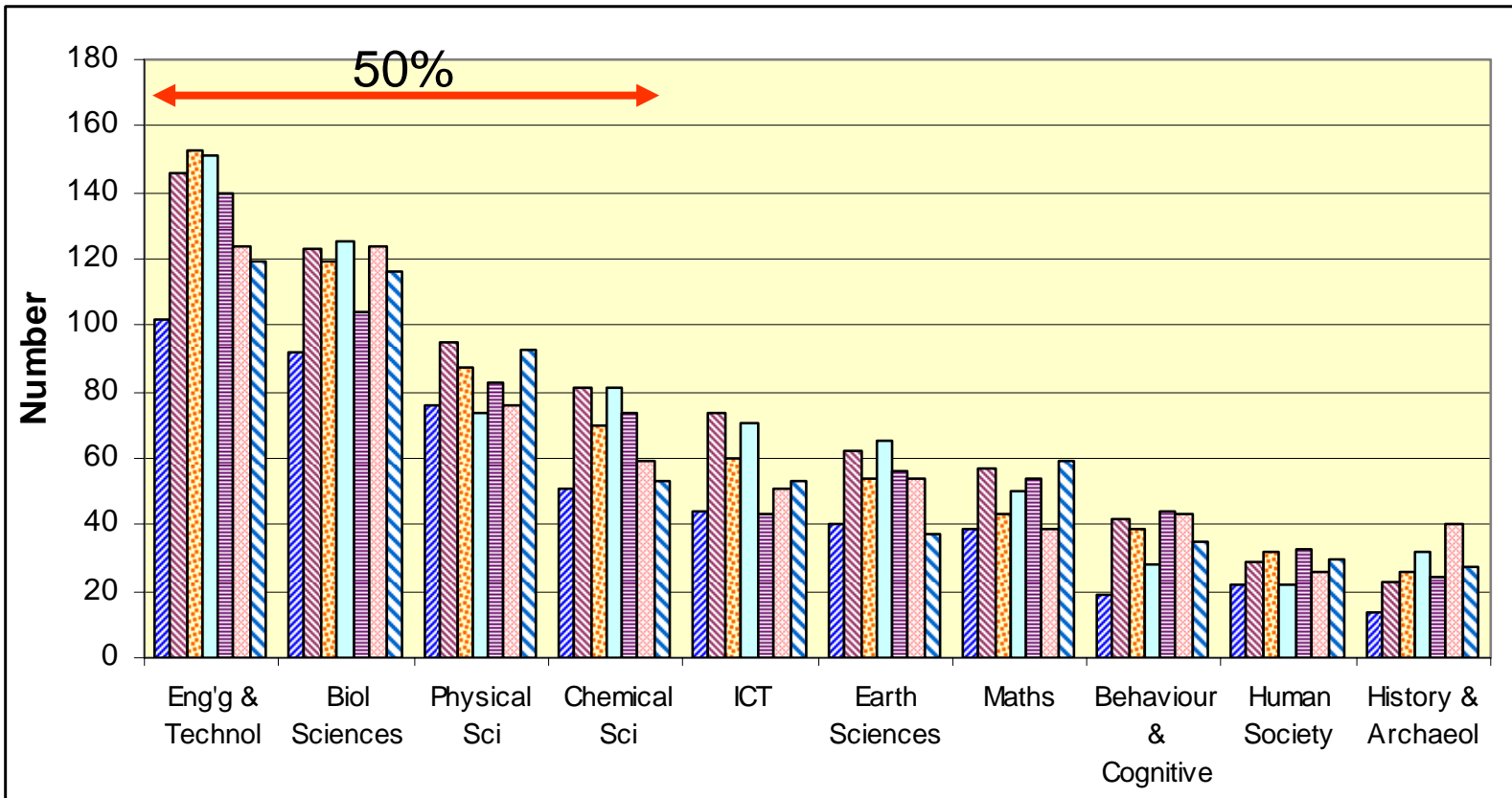
2002-2008





ARC Funded Projects

Predominant Research Fields – International Collaboration
2002-2008





International Focus

- In March 2008, Minister announced:
 - *Future Fellowships and other schemes open to international applicants*
 - ARC funds for travel for international collaborators.
 - *Enhancing international collaboration* will be a priority for all ARC fellowship schemes
-
- Significant changes to *Linkage Projects* Scheme
 - Release of Future Fellowships Scheme details
 - Re-badged Scheme: Australian Laureate Fellows
 - Revisions to Linkage International



International Fellowships

- *Future Fellowships:*
 - Mid-career researchers
 - Salary plus \$50k infrastructure funds
 - 3 salary levels - \$95k/yr; \$115k/yr; \$135k/yr plus on-costs
 - Open to all researchers across all sectors
 - Research environment
 - Match with strategic directions of host entity
 - First round closes 26th November
- *Australian Laureate Fellowships:*
 - Highest quality researchers
 - Salary top-up (Level E) plus project funds plus staffing funds
 - \$300k/yr plus 2x post-docs + 2x post-graduates
 - Primarily in University sector and PFRAs
 - First round closes 10th December



Linkage Projects

- **Primary aim**

- Encourage and extend cooperative approaches to research by strengthening links within Australia's innovation system and within innovation systems internationally
- Economic, social, environmental, policy or scientific benefit

- **Partners**

- Private sector; private non-profit organisation; a Govt org with funds not committed to internal research or any other purpose of research, evaluation and/or consultancy.

- **Selection Criteria**

- Investigators' Track Record 20%
- Project significance and innovation 25%
- Project approach and training 20%
- Project national benefit 10%
- Partner Organisation commitment 25%





Linkage Projects – 2009 Funding Rules

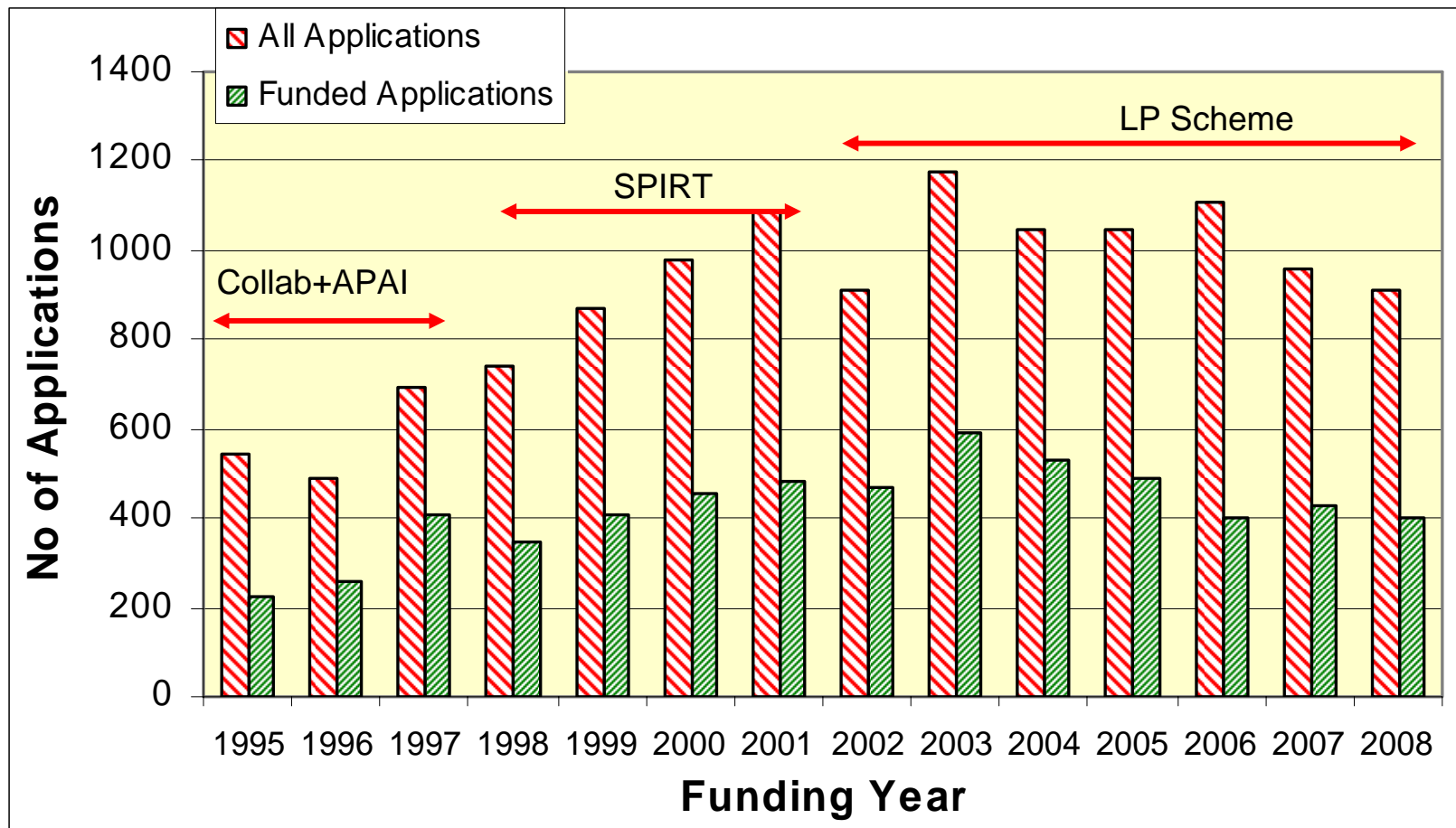
Major Changes

- Upper limit to each proposal - \$2m per year
- Support for CI to be relieved of other duties – limit of \$66k pa per CI. Justify in proposal; maximise interaction of CI with project and Partner Organisation
- Overseas higher education organisations are eligible to be Partner Organisation; requires at least one Australian Partner Organisation with proposal
- Citizenship requirement for APAs (post-grads) removed
- Travel requests clarified





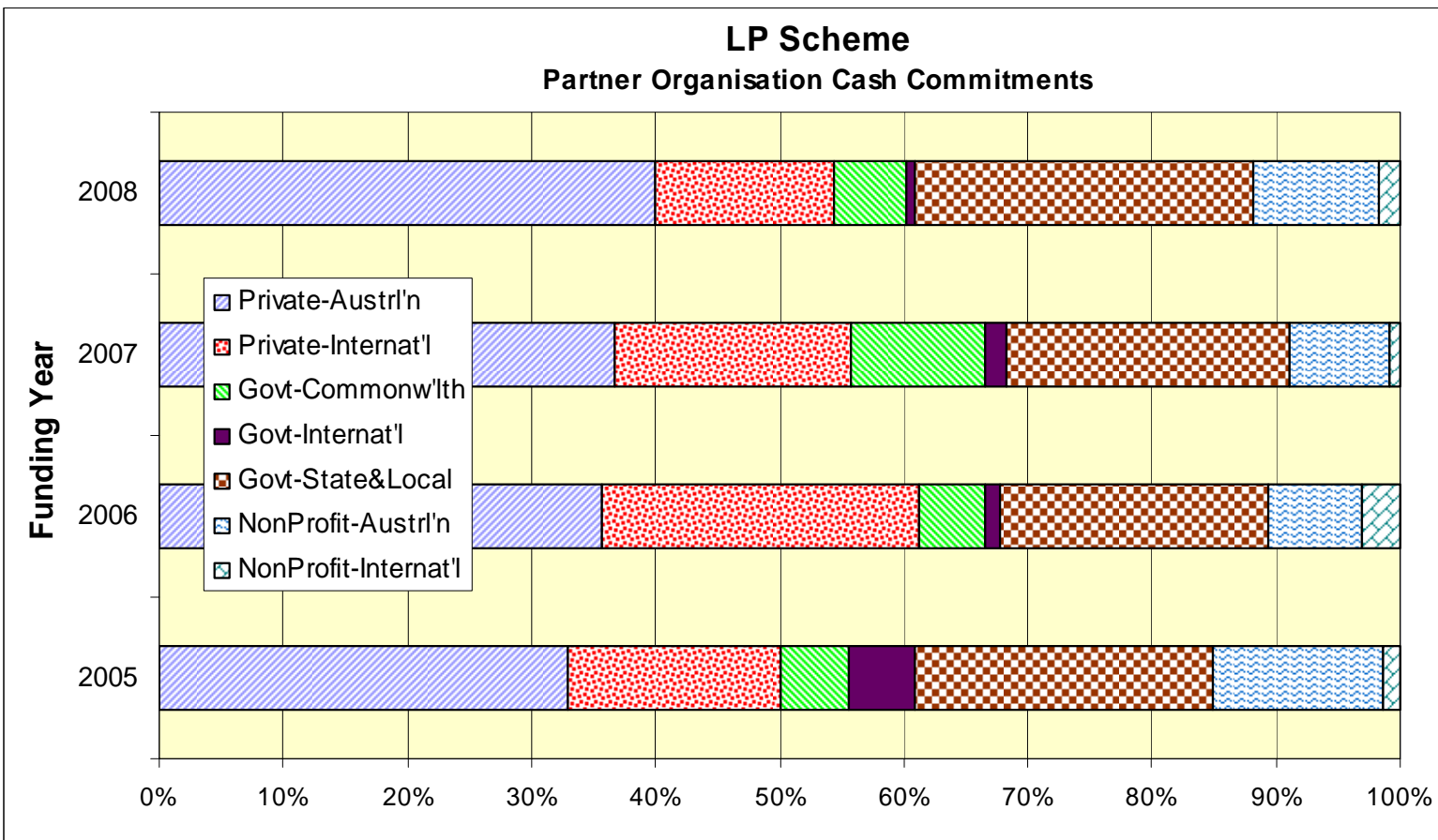
ARC Collaborative Projects (All Fields)





Partner Organisation Profile

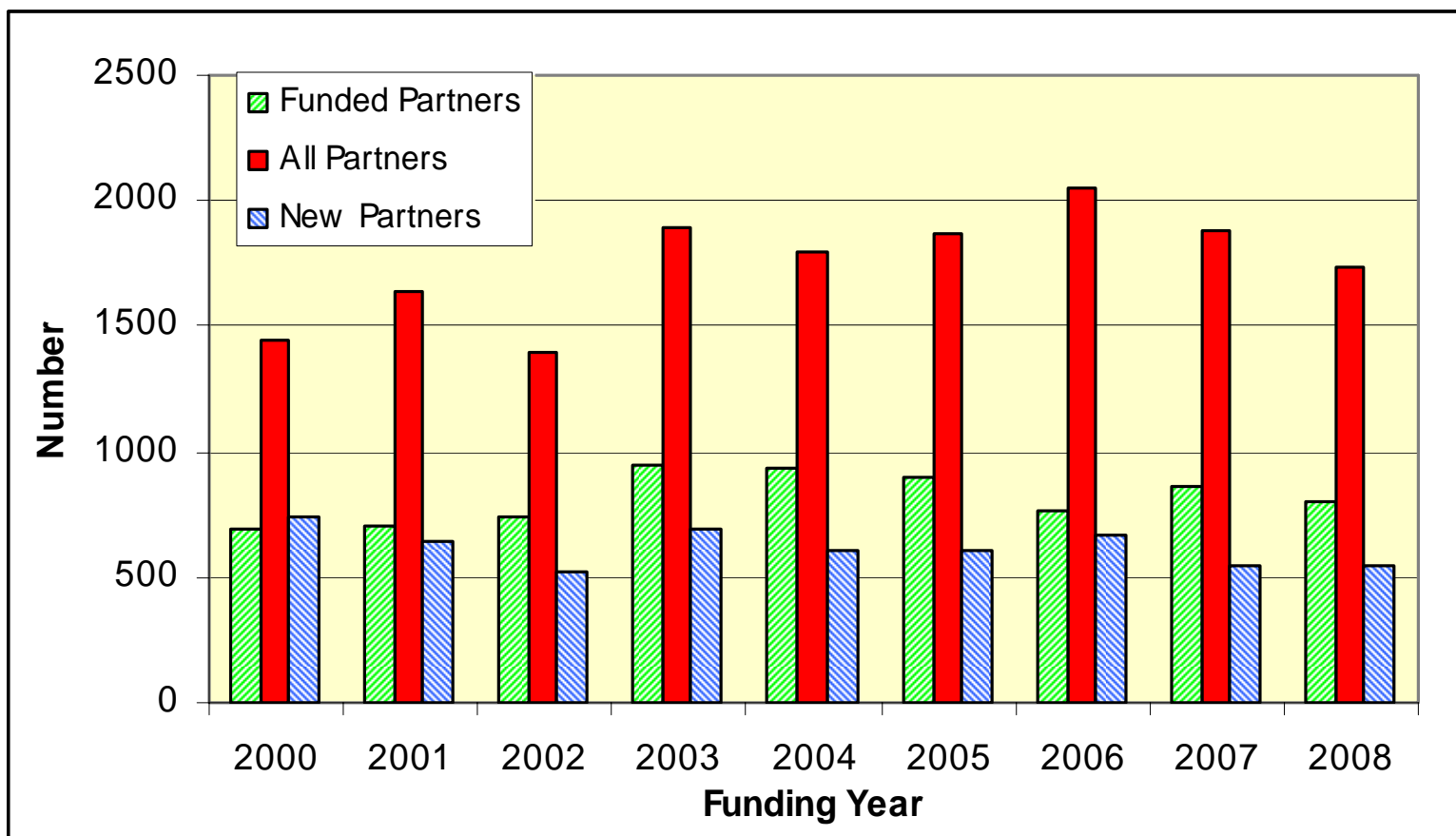
2005-2008





Partner Organisation Participation

Linkage Projects Scheme

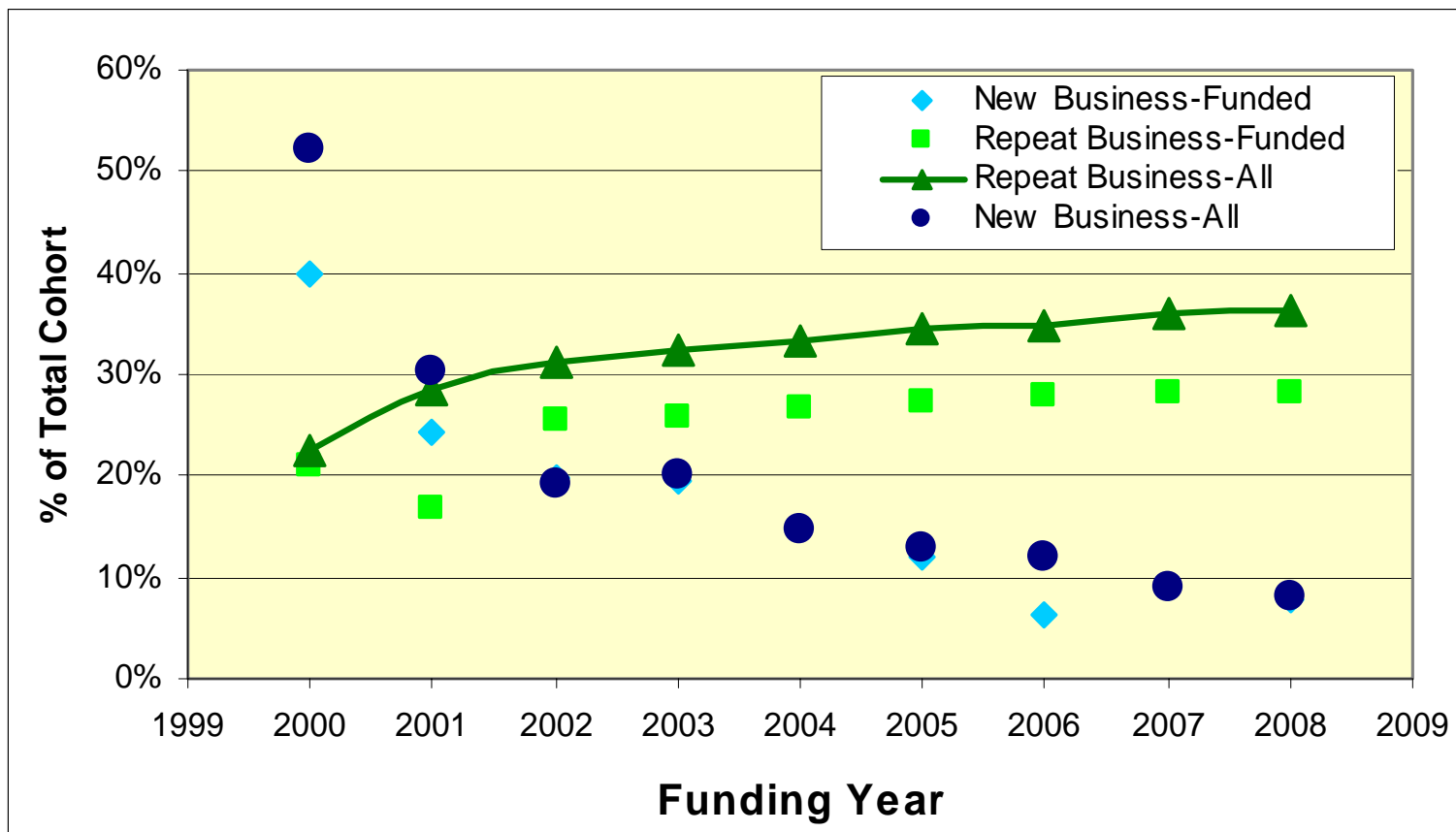


*New Partners: first occurrence as Partner Organisation on any project (since 1995)
Total for Period: 3,118 (funded)



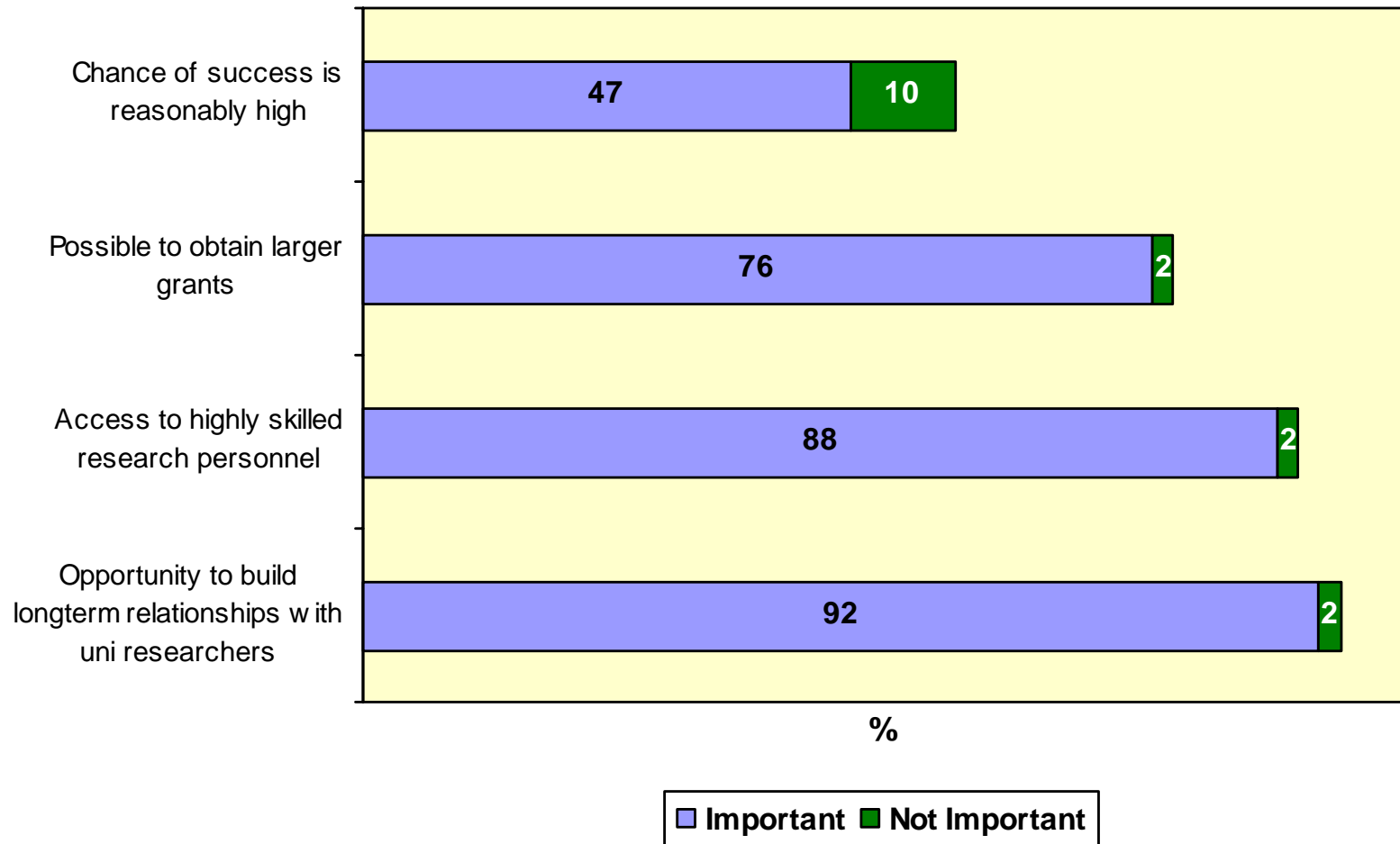
Partner Organisation Participation

Linkage Projects Scheme





Partner Organisation Views: Why Use LP Scheme ?





Examples of Partner Organisations

Alcoa
BAE Systems Australia
BHP Billiton Ltd
BlueScope Steel Ltd
Brisbane City Council
CSL Limited
GlaxoSmithKline Aust Pty Ltd
Hydro Tasmania
Rio Tinto Ltd
Telstra Corp Ltd

Bartlett Grain Pty Ltd
Gold Coast City Council
Lastek Pty Ltd
Leica Geosystems
Micronisers Pty Ltd
National Australia Bank Ltd
Native Seeds Pty Ltd
Orica Australia Pty Ltd
Ridley Aqua-Feeds Ltd
Ronin Films
Saltgrow Pty Ltd
Santos Ltd
Sialon Ceramics Pty Ltd
Suncorp General Insurance
Tissue Therapies Ltd
Ulan Coal Mines Ltd
Williams Boag Architects
Wind Prospect Pty Ltd

Dupont-Pioneer
Kaltim Prima Coal
Microsoft Pty Ltd
Optus Networks Pty Ltd
Sprint Advanced Technology Labs
Yokogawa Electric Corp

Aged Care Queensland Inc
Agricultural Producers Commission
AIDS Council of NSW
Australian Football League
Australian Macadamia Society
Australian Institute of Sport
Brotherhood of St. Laurence
Delfin Lend Lease
Diabetes Australia
Electoral Council of Australia
Flora Hill Secondary College
Forestry TAS
Greening Australia Ltd
Illawarra Retirement Trust
Lifeline Australia Inc
Linux Australia Inc
Macquarie Library Pty Ltd
McDonalds Australia Ltd
National Heart Foundation
Neporendi Aboriginal Forum Inc
Oxfam Australia
QLD Health

Australian Museum
Barwon Health
Bawanninga Aboriginal Corp
Bouliia State School
Bureau of Sugar Experiment Stations Ltd
Central Darling Shire Council
City of Greater Geelong
City of Rockingham
WA Dept of Environment
Geological Survey of VIC
Gippsland Coastal Board
Goulburn Murray Water
Healthy Waterways
Hunter Water Corp
Legal Aid QLD
Maribyrnong City Council
Midland Redevelopment Auth
Museum VIC
NSW Fisheries
NSW Police
Perth Zoo
Powerhouse Museum
Royal Flying Doctor Service
St Vincent de Paul Society
SA Museum
Timbercorp Ltd
Unions WA
VIC Dept of Education
Westmead Hospital



Summary

- Internationalisation of ARC Schemes
 - historically active despite restrictions
 - to be embedded in all schemes
 - new schemes reflect internationalisation
- Linkage Projects Scheme
 - Partner Org cohort is diverse and committed
 - 50%-60% of total cohort is private sector
 - 20%-25% of total cohort is international
 - > 3,000 new POs in R&D between 2000–2008
 - repeat business >30% for past seven years
 - partners look to build long-term relationships