



Australian Government
Australian Research Council

ARC Social, Behavioural and Economic Sciences:

Changes, Statistics, etc.

**Professor Phyllis Tharenou
Executive Director**

**Social, Behavioural and Economic Sciences
Presentation, Griffith University, 22nd May 2009**

Available at

http://www.arc.gov.au/media/ARC_Presentations.htm

Social, Behavioural and Economic Sciences



Australian Government
Australian Research Council

➡ Disciplines of:

- Education
- Behavioural & Cognitive Sciences: Psychology, Linguistics, Cognitive Sciences
- Geography, Demography,
- Sociology, Social Work
- Policy and Administration and Political Science
- Economics, Econometrics
- Accounting, Banking
- Commerce, Management, Tourism & Services: eg Accounting, Management, Marketing, Tourism, Transportation, Health



National Competitive Grants Program

(FY 08/09 \$596M)

Discovery (DP, DIRD, Future Fellows, Aust. Laureate Fellows, Superscience Fellows)

Excellent research by individuals and teams

(FY \$333M)

Linkage (LP, LIEF)

Collaborative research and infrastructure use - national & international

(FY \$169M)

Centres

National centres of research excellence

(FY \$94M)



Major ARC Schemes



Australian Government

Australian Research Council

■ *Discovery Projects* –

- excellent fundamental research by individuals and teams

■ *Discovery Indigenous Researchers Development* –

- develop research expertise of indigenous Australians

■ *Australian Laureate Fellows* -

- for outstanding researchers to stay in or return to Oz

■ *Future Fellows* –

- rewards best mid-career Australian researchers and outstanding international researchers
-

■ *Linkage Projects* –

- collaborative research between universities and industry/government/community

■ *Centres of Excellence* – large research teams conducting focussed, sustained investigations on important challenging problems

■ *Linkage infrastructure, equipment and facilities (LIEF)* –

- Collaboration across unis & partner orgs to fund major infrastructure

Desirables: Minister Carr

March 2009



- Applications to build on university's research strengths, think strategically, play to strengths
- Collaboration needed between universities and business and public sector research agencies
- Develop PhDs, support research students
- Collaborate across universities, especially international collaboration by researchers
- Collaboration across natural and human sciences

The Future



- **ARC consolidating to fewer, larger schemes with maximum flexibility**
 - Will no longer have
 - *ARC Networks scheme*
 - *Social Sciences Collaboration scheme & ARC International Fellowships scheme*
- **Increased focus on outcomes**
 - Reporting of outcomes of prior grant funding
 - Excellence in Research in Australia evaluation
- **Federal budget –**
 - Superscience Fellowships

08-09-10 ARC Policy Changes



Australian Government

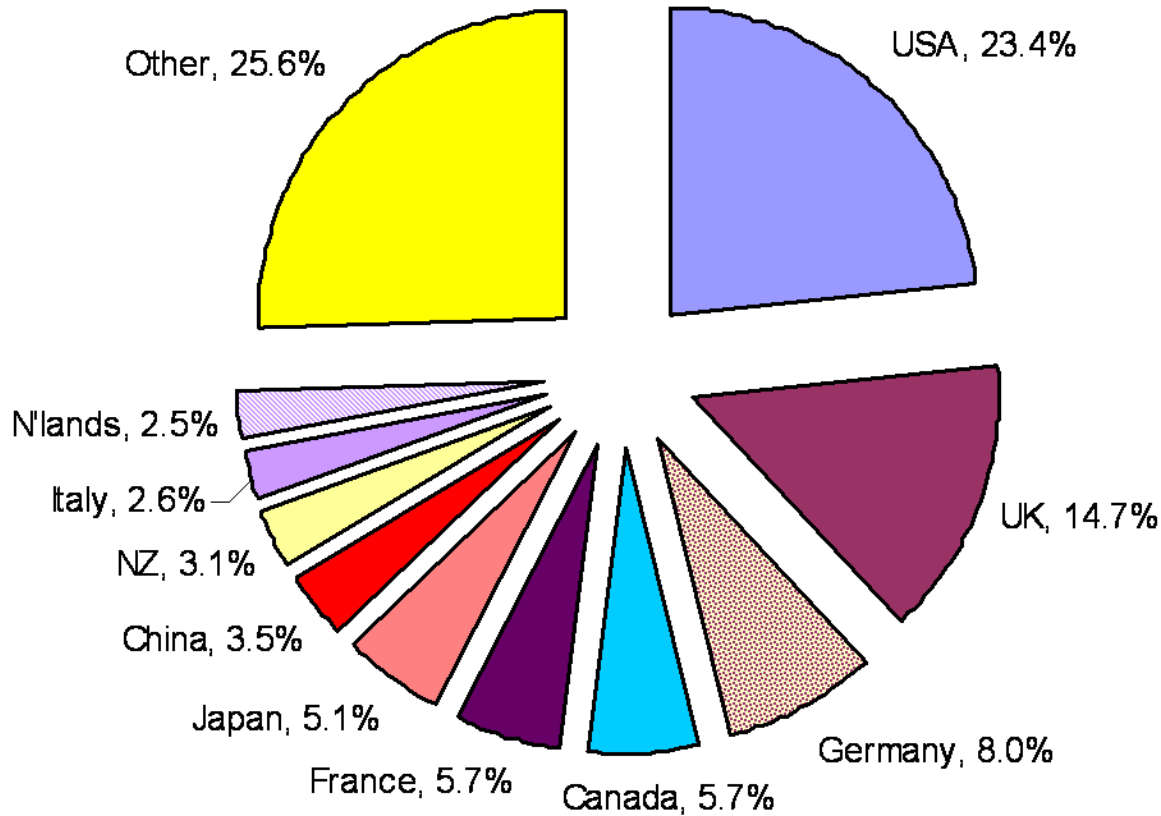
Australian Research Council

- **International collaboration**
 - *Discovery Projects* eg new international objective & support
- **New ways of building research capacity – 2008 for 2009**
 - *Future Fellows*
 - *Australian Laureate Fellows*
- **Enhancing research of Indigenous scholars**
 - *Discovery Indigenous Researchers Development* scheme
 - *New Australian Research Fellows – Indigenous*
 - *AIATSIS* added as an eligible organization
- **Centres to have a new round in 2010/11**
- **Evaluation changes:**
 - *ERA trials PCE July, HCA August*

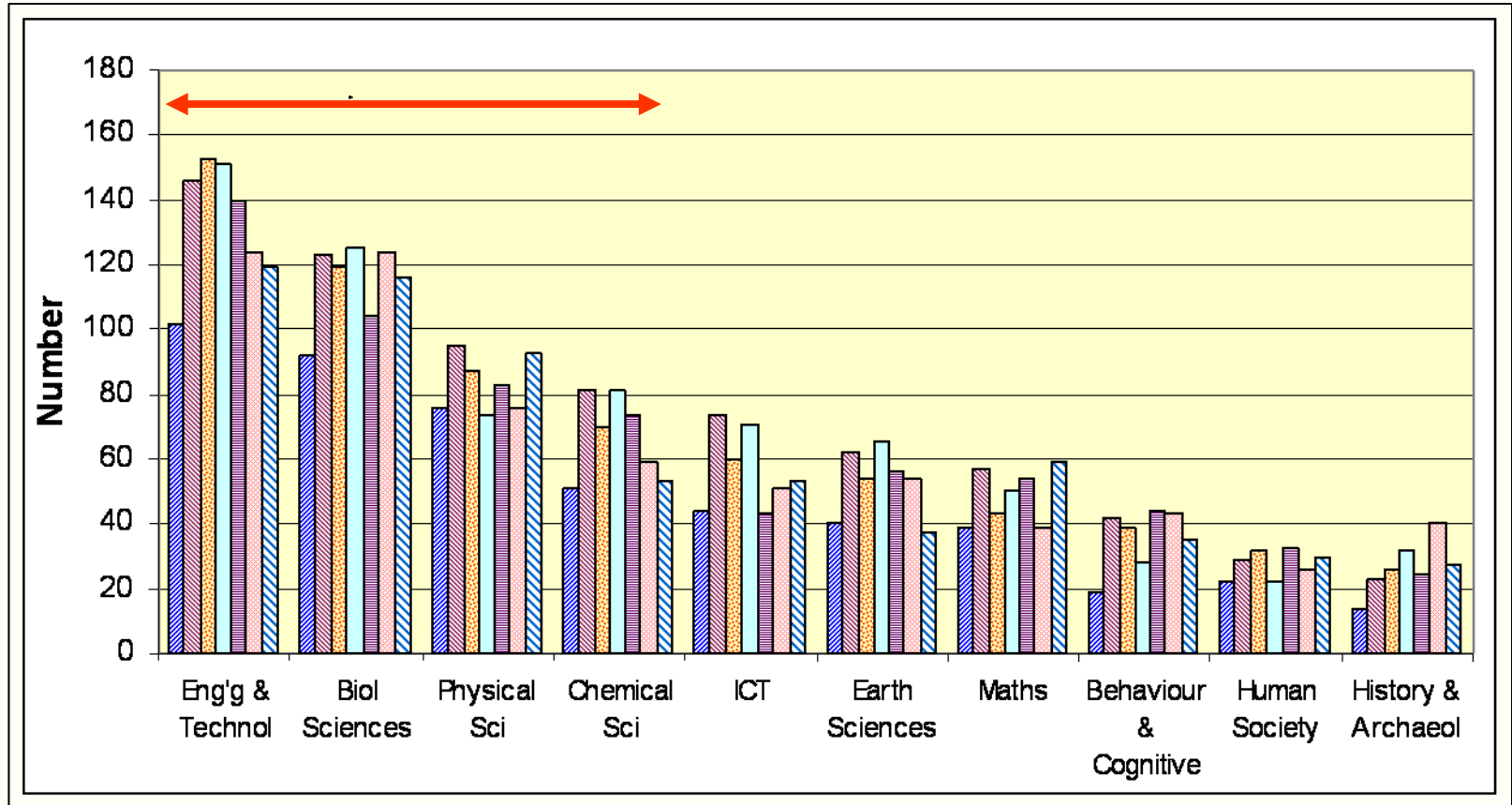
Distribution of International Collaboration 2002-2008: ARC Funded Projects



Australian Government
Australian Research Council



Major Research Fields – International Collaboration 2002-2008 ARC Funded Projects



DP Selection Criteria



Australian Government
 Australian Research Council

<u>Criteria</u>	<u>Discovery</u>	<u>Linkage</u>	<u>Future Fellows</u>
• Researcher Track Record	40%	20%	50%
• Project Significance & Innovation	30%	25%	-
• Project Quality	-	-	10%
• Project Approach	20%	20%	-
• National Benefit	10%	10%	-
• National Research Priority	-	-	10%
• Industry Partner Commitment	-	25%	-
• Collaboration	-	-	15%
• Strategy			15%
Total	100%	100%	100%
Success Rate about.....	20%.....	35-50%.....	-%.....

Changes to *Discovery Scheme* 2009 for 2010



Australian Government
Australian Research Council

- **New ‘International Collaboration Awards’**
 - 1 month minimum to 6 months maximum
 - For Oz CIs/Fellows & Overseas PIs to work together on a project
 - Covers travel and subsistence up to \$40,000 - prorata
- **Travel for overseas PIs or other research personnel if directly justified against doing the project -**
 - 1 per annum return economy to and from Oz to work on project
- **Always have had:**
 - PhD stipends for overseas candidates
 - Fellows as overseas candidates - APDs, ARFs/QE11s/ APFs
 - PIs living overseas (but can now request travel to & from Oz)
- **AIATSIS – eligible Administering Organisation**

Discovery Projects: No. of Applications & Results



ARC as a whole	2004	2005	2006	2007	2008	2009
No.	3,240	3,441	3,766	4,047	4,121	4,164
No. funded	875	1,053	917	822	878	845
Total Funds	237.9 million	297.5 million	273.6 million	274.7 million	300.8 million	288.4 million
ARC Success Rate	27.0%	30.9%	24.5%	20.4%	21.4%	20.4%
SBE Success Rate	31.0%	23.0%	19.0%	22.0%	22.0%	24.0%

Discovery Projects



- Av. duration of funded grants = Just over 3 years
- Av. 1st year funds gained: **\$116k = 67% of request**
 - SBE \$88.9k = 66% of request
- Av. funds gained for total project = **\$341k in 2009**
- ECR-only applications (ECR target = 15% of 1st year funds):
 - **2009 Overall Success Rate = 15.5%; For SBE = 20%**
 - **% of income overall = 10.2%; For SBE = 12.7%**
- Applications including ECRs
 - **2009 Success Rate Overall = 20%; For SBE = 24%**
- *Average no. assessments per proposal = 5 (2 CoE, 2 Oz Reader, 1 Int)*
 - *SBE Aver. No = 5.08, SD = 0.81*
- *Average no. Chief Investigators per funded grant = 2;*
 - *SBE = Just over 2 (eg 2.35)*

Discovery Projects



Australian Government
Australian Research Council

■ Fellowships –

Need good-excellent scores on: (1) project and (2) Fellow

- **Aust. Postdoc Fellowships (≤ 3 years since PhD) -
2009 Success Rate = 17%: SBE = 18.3%**
- **Aust. Research Fellows/Queen Elizabeth II Fellows -
 ≤ 8 years since PhD, also ≤ 13 years if previously
had ARF/QEII**
 - **2009 Success Rate = 15.1%: SBE = 20%**
- **Aust. Professorial Fellowships - ≤ 13 years since
PhD**
 - **2009 Success Rate = 14.3%: SBE = 14.3%**

No. & Success Rate of ECR-Only Proposals



Discip -line	ECR-Only Proposals Received	ECR-Only Proposals Approved for Funding	Success rate	ECR-Only Proposals: % of Total funding approved for 2009
BSB	93	13	14.0%	6.8%
EE	72	8	11.1%	5.9%
HCA	154	19	12.3%	13.0%
MIC	82	19	23.2%	12.2%
PCG	151	21	13.9%	11.3%
SBE	130	26	<u>20.0%</u>	<u>12.7%</u>
All	682	106	15.5%	10.2%

Success Rates of Proposals with 1 or More Self- Nominated ECRs



Australian Government
Australian Research Council

Discipline	2005	2006	2007	2008	2009
BSB	28.5%	23.3%	18.4%	17.2%	16.1%
EE	30.2%	20.9%	23.0%	20.0%	21.9%
HCA	22.6%	18.5%	15.3%	15.2%	18.4%
MIC	29.5%	22.5 %	20.9%	19.5%	20.1%
PCG	29.8%	21.3%	19.0%	22.8%	18.7%
SBE	25.0%	20.3%	12.7%	20.6%	<u>23.6%</u>
All	27.4%	21.0%	17.8%	19.3%	19.9%

Linkage Projects 2008/09/10

Changes to Funding Rules



Australian Government

Australian Research Council

- Overseas higher education organisations eligible as Partner Organisations - need at least 1 Australian Partner Organisation
 - Could always have overseas organisations as partners
- Citizenship/residency requirements for APA-I (PhD scholarships) removed for 2008
- CIs, PIs, APDIs & research support personnel can have funds for domestic & international travel for the project
- \$ 2m/year Upper limit to each proposal in exceptional cases (*Linkage Projects* normally \$500K total maximum)
- AIATSIS – eligible Administering Organisation
- Success Rates Last 7 Rounds:
 - 36.7%, 35.7%, 42.9%, 46.0%, 47.6%, 42.7%, 49.4%

Linkage Projects



Australian Government
Australian Research Council

- Av. duration of funded grants = **Just over 3 years**
- Av. 1st year funds gained 2009 Rd1: **\$134k - 71% of request**
 - **SBE \$95,18k: 71% of request**
- Av. funds gained for total project 2009 Rd1= **\$329k in 2009**
- **Average no. of chief investigators per funded grant = Just under 3 (2.7/2.8); SBE Over 3.33/3.53**
- **Fellowships – Need top project scores and fellow score (TR)**
 - **APAI - 2009 Success Rate 34%/34%: SBE 36%/33%**
 - **APAI _IT (quota of 50)- 2009 Success Rate 74%/91%**
 - **Aust. Postdoc Fellows Industry -2009 Success Rate 43%/52%:
SBE 50%/87%**
 - **Av. funding gained by Rural & Regional apps= 38.7%; SBE 36%**



Linkage Projects 2009 Round 1



■ Partner Organization Contribution by sector

■ Commonwealth Government	5%
■ State & Local Government	<u>29%</u>
■ International	1%
■ Nonprofit Australian	12%
■ Nonprofit International	4%
■ Private company Australian	<u>33%</u>
■ International company Australian	18%

Linkage Projects 2009 Round 1



Australian Government
Australian Research Council

Discipline Group	Proposals received	Proposals approved	Success rate %	Requested funds over project life (all proposals) \$ million	Indicative funds over project life (approved) \$ million
BSB	85	37	43.5%	42.21	14.42
EE	100	55	55.0%	42.22	17.05
HCA	32	18	56.3%	11.98	5.31
MIC	45	24	53.3%	18.16	8.26
PCG	39	16	41%	14.15	6.92
SBE	140	68	48.6%	50.08	19.74
<i>All</i>	<i>441</i>	<i>218</i>	<i>49.4%</i>	<i>178.81</i>	<i>72.00</i>

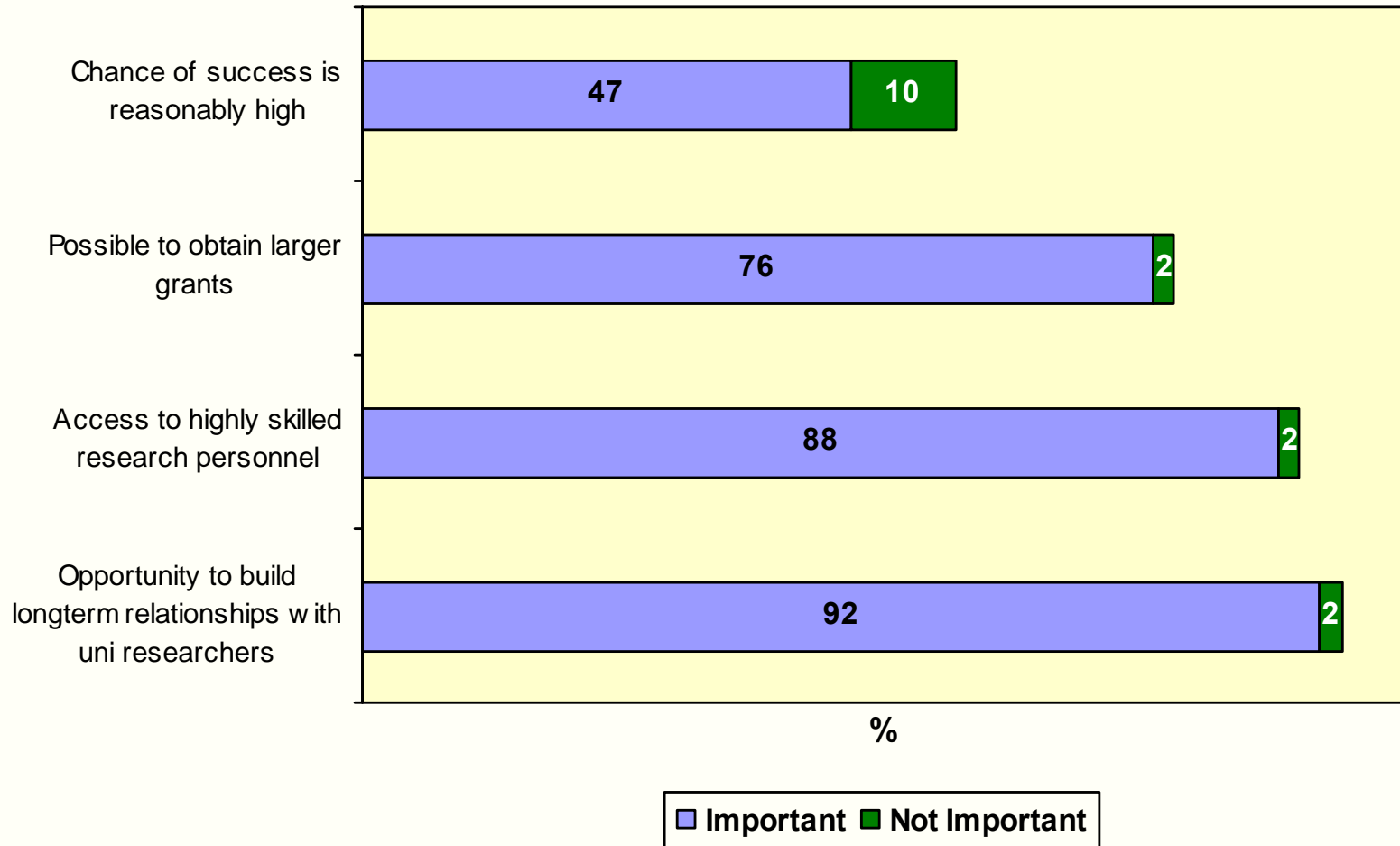
Linkage Projects 2008 – Round 2



Australian Government
Australian Research Council

Discipline Group	Proposals received	Proposals approved	Success rate	Requested funds over project life (all proposals) \$ million	Indicative funds over project life (approved) \$ million
BSB	93	39	41.9%	36.54	13.37
EE	105	49	46.7%	45.03	14.40
HCA	37	15	40.5%	10.14	3.98
MIC	56	21	37.5%	26.26	7.88
PCG	54	26	48.1%	21.66	7.56
SBE	142	58	40.8%	43.27	16.50
<i>All</i>	<i>487</i>	<i>208</i>	<i>42.7%</i>	<i>182.91</i>	<i>63.71</i>

Partner Organisation Views: Why Use LP Scheme ?



Future Fellowships



Australian Government
Australian Research Council

- \$844m scheme – 2009-2013 – Can apply twice in the period
- 200, 4-year fellowships over next 5 years = 1000
- Mid-career researchers (5-15 years post-PhD)
- Australian and international applicants
- Salaries up to \$140K (3 levels) + \$50K pa for infrastructure, equipment, travel & relocation costs directly related to the research
- Has selection criteria 'Strategic Alignment' & 'Collaboration'.
 - List of Research Strengths submitted by Administering Org.
 - Candidates must demonstrate capacity to build collaboration across industry and/or research institutions and/or disciplines.
- ❖ Research into Indigenous health and wellbeing a priority

SBE & HCA Future Fellowship Applications (24% of all applications)



Australian Government
Australian Research Council

RFC D	RFCD Description	Number projects	Proportion
28	INFORMATION, COMPUTING AND COMMUNICATION SCIENCES	1	0.4%
31	ARCHITECTURE, URBAN ENVIRONMENT AND BUILDING	5	2.1%
32	MEDICAL AND HEALTH SCIENCES	3	1.3%
33	EDUCATION	13	5.6%
34	ECONOMICS	20	8.5%
35	COMMERCE, MANAGEMENT, TOURISM AND SERVICES	21	9.0%
36	POLICY AND POLITICAL SCIENCE	15	6.4%
37	STUDIES IN HUMAN SOCIETY	33	14.1%
38	BEHAVIOURAL AND COGNITIVE SCIENCES	26	11.1%
39	LAW, JUSTICE AND LAW ENFORCEMENT	24	10.3%
40	JOURNALISM, LIBRARIANSHIP AND CURATORIAL STUDIES	2	0.9%
41	THE ARTS	7	3.0%
42	LANGUAGE AND CULTURE	18	7.7%
43	HISTORY AND ARCHAEOLOGY	28	12.0%
44	PHILOSOPHY AND RELIGION	18	7.7%
Total		234	100.0%

Australian Laureate Fellows



Australian Government
Australian Research Council

- Allocate \$239 million over 5 years
- Up to 15 to be awarded
- Each worth around \$3 million
- Are the most prestigious fellowships (Professor + \$100K) and the top of the career path
- National and international applicants
- Emphasis on research leadership & mentoring
 - Funds for 2 postdoctoral and 2 postgraduate researchers and project funding (up to \$300K). Will work with & mentor
- Success rate combining SBE and HCA has most often been about 20% in recent times.



Discovery Indigenous Researchers' Development



- **Applicants**
 - Australian Aboriginal or Torres Strait Islander descent
 - Need not have a PhD
 - Have not been a CI on an ARC grant or had an ARC fellowship
- **Success Rate 2006 62.5%, 2007 71.4%, 2008 39%, 2009 34.6%**
- **Most applications are from SBE and HCA**
- **Salary support provided to Indigenous Australian researchers and postgraduate research students**
 - Postdoctoral Indigenous Researcher Fellowships
- **Changes in 2009 for 2010**
 - Australian Institute for Aboriginal and Torres Strait Islander Studies (AIATSIS) can apply as an administering organisation
 - New Fellowship introduced:
 - *Australian Research Fellows – Indigenous:* for 2 or 3 years
 - More senior, Not developmental

ARC Centres of Excellence



- ❑ *2003 Cohort runs out in December 2010*
- ❑ *Review of ARC Centres of Excellence – 2005 cohort*
 - **Eleven Centres reviewed in 2008 and extended**
- ❑ *New Groundwater Centre in operation (May 2008)*
- ❑ *Centres consultation paper*
 - **Release delayed**
- ❑ *New ARC Centres of Excellence round for funding commencing July 2010*
 - **New round for funding commencing July 2010 for 7 years.**
 - **Applications expected to open 3rd quarter 2009.**
 - **Assessment and selection processes to take place into early 2010 – will be extra competitive.**

Success Rates for SBE in Major RFCD codes across All Schemes



Australian Government

Australian Research Council

RFCD	2004	2005	2006	2007	2008
33 Education	28%	26%	24%	25%	30%
34 Economics	44%	39%	33%	34%	32%
35 Commerce, Mgt, Tourism & Services	35%	23%	24%	23%	17%
36 Policy & Political Science	31%	30%	21%	19%	25%
37 Studies in Human Society	32%	28%	26%	26%	18%
38 Behavioural & Cognitive Sciences	38%	30%	26%	29%	29%
32 Medical and Health Sciences	43%	24%	32%	38%	32%

All Currently Funded SBE Projects



Australian Government
Australian Research Council

RFCD	RFCD Description	Number of projects	Proportion
32	MEDICAL AND HEALTH SCIENCES	152	16%
33	EDUCATION	125	13%
34	ECONOMICS	119	12%
35	COMMERCE, MANAGEMENT, TOURISM AND SERVICES	108	11%
36	POLICY AND POLITICAL SCIENCE	69	7%
37	STUDIES IN HUMAN SOCIETY	121	13%
38	BEHAVIOURAL AND COGNITIVE SCIENCES	227	24%
Other		42	4%
Total		963	100%

Conclusion: Opportunities



Australian Government

Australian Research Council

- **Linkage Project** highest success rates
 - State & Local Governments, Australian and International Private companies
- **Career opportunities for researchers:**
 - *DP Fellows: Postdoc ≤ 3 years; 3-8 years; Professorial Fellow >8 years*
 - *LP Fellows*
 - *Future Fellows (5-15 years) -midcareer*
 - *Australian Laureate Fellows*
- For top groups, new **Centres** round
- International collaboration – *DP & LP Projects, Future Fellows*
- Indigenous researchers and indigenous research
- Early career researchers – sole or with other CIs in *DP*