

**Selected statistics for the
Strategic Partnerships with Industry - Research and Training
(SPIRT) Scheme -
Projects to commence in 2001**

Table 1. Number of funded applications and success rate by Institution

Table 2. Number of funded Rural & Regional applications and success rate by Institution

Figure 1. Number of funded Rural & Regional and other funded applications

Table 3. Amount requested and allocated by Institution for all applications

Table 4. Number of funded applications and success rate by UIRCC Panel

Table 5. Amount requested and allocated by UIRCC Panel for funded applications

Table 6. Funded projects by Research Fields, Courses and Disciplines (RFCD) Classification (Division Level)

Table 7. Funded projects by Socio-Economic Objective (SEO) Classification – (Division Level)

Table 8. Age and gender of applicant investigators by application status

Table 9. Success rate of applicant investigators by gender and UIRCC Panel

Table 10. Number of application assessments by the assessor's organisation

Table 11. Number of Industry Partners and pledged contributions by industry type

Figure 2. Pledged contributions for funded applications by Industry Partner Classification

Table 12. Success rate of project and training components by UIRCC Panel

Table 13. Number of funded project and training components by Institution

Table 14. Pledged Industry Partner and Commonwealth contribution by Institution

Table 15. Application and component success rate by year (1998 - 2001)

Figure 3. Submitted and funded applications for SPIRT Grants (1998 - 2001)

Figure 4. Funded components of SPIRT Grants (1998 - 2001)

Figure 5. Success rates of funded components of SPIRT grants (1998-2001)

Table 16. Incidence of International Collaboration

Strategic Partnerships with Industry - Research and Training Scheme
Applications for funding to commence in 2001

Table 1. Number of funded applications and success rate by Institution

<i>Administering Institution</i>	<i>Total Applications Received</i>	<i>Funded</i>	<i>Success Rate %</i>
Australian Catholic University	11	5	45.5
Charles Sturt University	20	10	50.0
Macquarie University	14	5	35.7
Southern Cross University	13	5	38.5
The University of New England	17	7	41.2
The University of New South Wales	94	52	55.3
The University of Newcastle	28	13	46.4
The University of Sydney	57	31	54.4
University of Technology, Sydney	26	11	42.3
University of Western Sydney	41	13	31.7
University of Wollongong	40	27	67.5
Deakin University	46	24	52.2
La Trobe University	22	4	18.2
Monash University	54	19	35.2
RMIT University	33	11	33.3
Swinburne University of Technology	20	8	40.0
The University of Melbourne	89	44	49.4
University of Ballarat	22	11	50.0
Victoria University	18	5	27.8
Central Queensland University	7	2	28.6
Griffith University	29	13	44.8
James Cook University	14	8	57.1
Queensland University of Technology	56	20	35.7
The University of Queensland	75	25	33.3
University of Southern Queensland	5	3	60.0
University of the Sunshine Coast	2	2	100.0
The Flinders University of South Australia	12	7	58.3
The University of Adelaide	31	14	45.2
University of South Australia	36	14	38.9
Curtin University of Technology	21	7	33.3
Edith Cowan University	20	7	35.0
Murdoch University	22	11	50.0
The University of Western Australia	30	19	63.3
University of Tasmania	43	21	48.8
Australian Maritime College	2	0	0.0
Northern Territory University	3	1	33.3
University of Canberra	6	1	16.7
The Australian National University	6	4	66.7
Total	1085	484	44.6

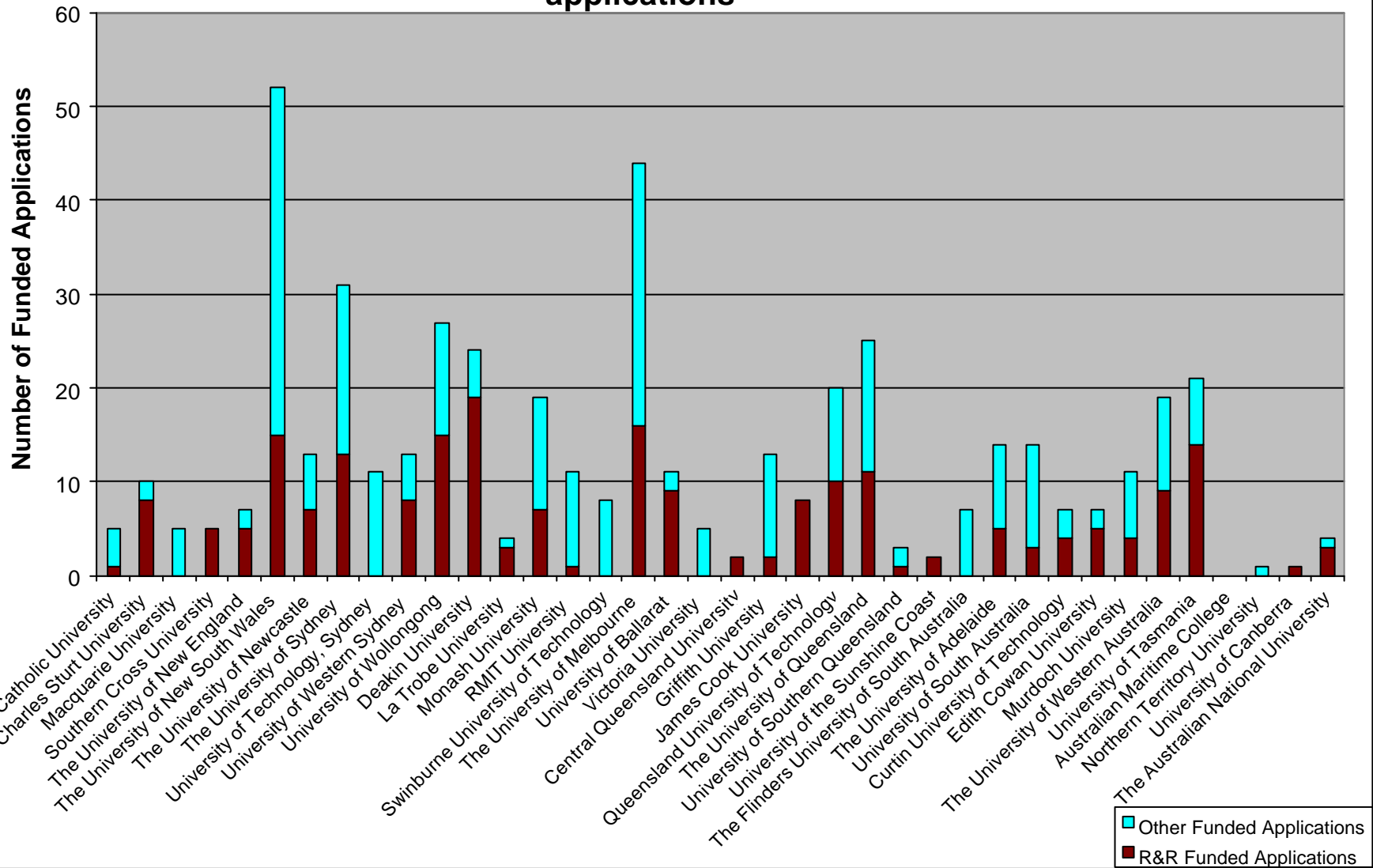
Strategic Partnerships with Industry - Research and Training Scheme
Applications for funding to commence in 2001

Table 2. Number of funded Rural & Regional applications and success rate by Institution*

<i>Administering Institution</i>	<i>R & R Applications Received</i>	<i>R & R Funded</i>	<i>Success Rate %</i>
Australian Catholic University	3	1	33.3%
Charles Sturt University	18	8	44.4%
Macquarie University	3	0	0.0%
Southern Cross University	13	5	38.5%
The University of New England	13	5	38.5%
The University of New South Wales	29	15	51.7%
The University of Newcastle	15	7	46.7%
The University of Sydney	28	13	46.4%
University of Technology, Sydney	9	0	0.0%
University of Western Sydney	20	8	40.0%
University of Wollongong	20	15	75.0%
Deakin University	35	19	54.3%
La Trobe University	10	3	30.0%
Monash University	20	7	35.0%
RMIT University	10	1	10.0%
Swinburne University of Technology	0	0	0.0%
The University of Melbourne	42	16	38.1%
University of Ballarat	18	9	50.0%
Victoria University	7	0	0.0%
Central Queensland University	7	2	28.6%
Griffith University	8	2	25.0%
James Cook University	14	8	57.1%
Queensland University of Technology	27	10	37.0%
The University of Queensland	46	11	23.9%
University of Southern Queensland	3	1	33.3%
University of the Sunshine Coast	2	2	100.0%
The Flinders University of South Australia	3	0	0.0%
The University of Adelaide	14	5	35.7%
University of South Australia	9	3	33.3%
Curtin University of Technology	14	4	28.6%
Edith Cowan University	9	5	55.6%
Murdoch University	10	4	40.0%
The University of Western Australia	17	9	52.9%
University of Tasmania	33	14	42.4%
Australian Maritime College	1	0	0.0%
Northern Territory University	2	0	0.0%
University of Canberra	3	1	33.3%
The Australian National University	3	3	100.0%
Total	538	216	40.1%

* Rural & Regional applications received are a subset of total applications received (1085)

Figure 1: Number of funded Rural & Regional and number of other funded applications



Strategic Partnerships with Industry - Research and Training Scheme
Applications for funding to commence in 2001

Table 3. Amount requested and allocated by Institution for all applications

Administering Institution	Year 1		Year 2		Year 3		Total	
	Requested	Allocated	Requested	Allocated	Requested	Allocated	Requested	Allocated
Australian Catholic University	\$307,915	\$111,460	\$284,411	\$111,460	\$186,879	\$89,168	\$779,205	\$312,088
Charles Sturt University	\$907,990	\$298,336	\$828,597	\$251,336	\$707,550	\$243,336	\$2,444,137	\$793,008
Macquarie University	\$995,971	\$295,584	\$836,683	\$266,584	\$743,688	\$273,584	\$2,576,342	\$835,752
Southern Cross University	\$622,889	\$265,596	\$624,641	\$220,876	\$563,909	\$176,876	\$1,811,439	\$663,348
The University of New England	\$1,126,091	\$426,558	\$981,657	\$247,464	\$910,773	\$211,484	\$3,018,521	\$885,506
The University of New South Wales	\$5,575,063	\$2,328,816	\$5,883,662	\$2,107,834	\$4,794,853	\$1,684,513	\$16,253,578	\$6,121,163
The University of Newcastle	\$1,710,432	\$449,514	\$1,455,826	\$373,500	\$1,351,828	\$311,128	\$4,518,086	\$1,134,142
The University of Sydney	\$4,179,849	\$1,944,154	\$4,129,922	\$1,773,131	\$3,839,795	\$1,677,406	\$12,149,566	\$5,394,691
University of Technology, Sydney	\$1,708,045	\$585,292	\$1,751,355	\$484,352	\$1,453,010	\$423,052	\$4,912,410	\$1,492,696
University of Western Sydney	\$2,288,272	\$591,900	\$2,031,062	\$517,460	\$1,469,750	\$446,876	\$5,789,084	\$1,556,236
University of Wollongong	\$2,293,029	\$1,297,083	\$2,186,915	\$1,185,425	\$2,113,287	\$1,152,878	\$6,593,231	\$3,635,386
Deakin University	\$1,462,176	\$845,950	\$1,457,590	\$804,664	\$1,328,143	\$719,978	\$4,247,909	\$2,370,592
La Trobe University	\$1,390,584	\$89,168	\$1,363,797	\$89,168	\$1,358,792	\$89,168	\$4,113,173	\$267,504
Monash University	\$2,855,361	\$769,622	\$2,654,124	\$696,384	\$2,391,166	\$637,626	\$7,900,651	\$2,103,632
RMIT University	\$1,954,540	\$493,631	\$1,841,986	\$400,351	\$1,341,992	\$255,686	\$5,138,518	\$1,149,668
Swinburne University of Technology	\$798,739	\$393,436	\$766,082	\$341,476	\$634,245	\$333,576	\$2,199,066	\$1,068,488
The University of Melbourne	\$5,427,019	\$2,262,965	\$5,400,973	\$2,079,988	\$4,454,099	\$1,616,362	\$15,282,091	\$5,959,315
University of Ballarat	\$597,494	\$302,420	\$590,651	\$290,420	\$543,471	\$296,420	\$1,731,616	\$889,260
Victoria University	\$534,629	\$132,028	\$531,988	\$129,168	\$385,561	\$66,876	\$1,452,178	\$328,072
Central Queensland University	\$477,810	\$65,292	\$462,715	\$65,292	\$108,145	\$22,292	\$1,048,670	\$152,876
Griffith University	\$1,563,511	\$639,386	\$1,437,965	\$506,405	\$1,189,994	\$437,242	\$4,191,470	\$1,583,033
James Cook University	\$800,306	\$416,332	\$757,002	\$355,752	\$563,682	\$239,752	\$2,120,990	\$1,011,836
Queensland University of Technology	\$2,885,543	\$814,010	\$2,698,853	\$726,876	\$2,148,650	\$568,542	\$7,733,046	\$2,109,428
The University of Queensland	\$5,352,803	\$1,350,800	\$4,714,252	\$1,072,420	\$3,972,126	\$884,920	\$14,039,181	\$3,308,140
University of Southern Queensland	\$156,754	\$99,444	\$144,012	\$98,584	\$154,744	\$101,584	\$455,510	\$299,612
University of the Sunshine Coast	\$49,127	\$44,584	\$47,620	\$44,584	\$23,590	\$22,292	\$120,337	\$111,460
Curtin University of Technology	\$1,226,424	\$409,554	\$1,167,679	\$388,234	\$1,117,754	\$374,882	\$3,511,857	\$1,172,670
Edith Cowan University	\$760,984	\$250,888	\$703,037	\$213,876	\$446,814	\$86,876	\$1,910,835	\$551,640
Murdoch University	\$1,258,207	\$380,612	\$1,163,569	\$342,752	\$886,119	\$223,752	\$3,307,895	\$947,116
The University of Western Australia	\$1,969,332	\$849,874	\$1,458,061	\$718,919	\$1,386,019	\$671,866	\$4,813,412	\$2,240,659
The Flinders University of South Australia	\$483,259	\$221,949	\$482,209	\$189,332	\$465,882	\$180,235	\$1,431,350	\$591,516
The University of Adelaide	\$1,812,360	\$608,708	\$1,713,496	\$522,628	\$1,561,192	\$546,128	\$5,087,048	\$1,677,464
University of South Australia	\$2,375,509	\$748,672	\$2,218,736	\$705,589	\$1,919,718	\$502,494	\$6,513,963	\$1,956,755
University of Tasmania	\$2,214,194	\$997,508	\$2,050,025	\$871,248	\$1,879,287	\$821,146	\$6,143,506	\$2,689,902
Northern Territory University	\$171,434	\$32,292	\$166,477	\$22,292	\$154,823	\$22,292	\$492,734	\$76,876
University of Canberra	\$545,724	\$95,000	\$331,907	\$70,000	\$279,863	\$70,000	\$1,157,494	\$235,000
Australian Maritime College	\$162,532		\$147,355		\$149,791		\$459,678	
The Australian National University	\$447,292	\$223,444	\$446,700	\$192,584	\$437,050	\$197,584	\$1,331,042	\$613,612
Total	\$61,449,193	\$22,131,862	\$57,913,592	\$19,478,408	\$49,418,034	\$16,679,872	\$168,780,819	\$58,290,142

Strategic Partnerships with Industry - Research and Training Scheme - 2000 Applications

Table 4. Number of funded applications and success rate by UIRCC Panel

<i>Panel</i>	<i>Total Applications Received</i>	<i>Funded</i>	<i>Success Rate %</i>
C1 Information, Technology and Mathematical Sciences	133	66	49.6
C2 Biological, Medical and Rural Sciences	322	133	41.3
C3 Engineering and Earth Sciences	181	83	45.9
C4 Social Sciences and Humanities	298	130	43.6
C5 Physical Sciences and Chemical Sciences	151	72	47.7
Total	1085	484	44.6

Strategic Partnerships with Industry - Research and Training Scheme
Applications for funding to commence in 2001

Table 5. Amount requested and allocated by UIRCC Panel for funded applications

Panel	Year 1		Year 2		Year 3		Total	
	Requested	Allocated	Requested	Allocated	Requested	Allocated	Requested	Allocated
C1 Information, Technology and Mathematical Sciences	\$3,338,682	\$2,995,703	\$3,270,684	\$2,797,717	\$2,744,298	\$2,305,070	\$9,353,664	\$8,098,490
C2 Biological, Medical and Rural Sciences	\$6,906,669	\$6,137,322	\$6,840,030	\$5,338,196	\$6,251,194	\$4,942,267	\$19,997,893	\$16,417,785
C3 Engineering and Earth Sciences	\$4,888,919	\$3,834,402	\$4,498,613	\$3,435,180	\$3,869,656	\$2,900,830	\$13,257,188	\$10,170,412
C4 Social Sciences and Humanities	\$7,506,363	\$5,586,202	\$7,219,556	\$4,656,678	\$5,419,167	\$3,612,116	\$20,145,086	\$13,854,996
C5 Physical Sciences and Chemical Sciences	\$4,451,683	\$3,578,233	\$4,194,564	\$3,250,637	\$3,988,294	\$2,919,589	\$12,634,541	\$9,748,459
Total	\$27,092,316	\$22,131,862	\$26,023,447	\$19,478,408	\$22,272,609	\$16,679,872	\$75,388,372	\$58,290,142

Strategic Partnerships with Industry - Research and Training Scheme
Applications for funding to commence in 2001

Table 6. Funded projects by Research Fields, Courses and Disciplines (RFCD) Classification (Division Level) ^(a)

<i>Classification</i>	<i>Total Applications Received</i>	<i>Funded</i>	<i>Success Rate %</i>
23 MATHEMATICAL SCIENCES	14.0	8.2	58.8
24 PHYSICAL SCIENCES	11.4	8.4	73.7
25 CHEMICAL SCIENCES	44.6	28.8	64.7
26 EARTH SCIENCES	37.6	19.8	52.5
27 BIOLOGICAL SCIENCES	91.2	47.8	52.4
28 INFORMATION, COMPUTING AND COMMUNICATION SCIENCES	82.8	40.9	49.4
29 ENGINEERING AND TECHNOLOGY	248.8	105.5	42.4
30 AGRICULTURAL, VETERINARY AND ENVIRONMENTAL SCIENCES	152.7	57.3	37.6
31 ARCHITECTURE, URBAN ENVIRONMENT AND BUILDING	16.1	4.0	24.6
32 MEDICAL AND HEALTH SCIENCES	84.6	27.9	32.9
33 EDUCATION	50.6	17.8	35.2
34 ECONOMICS	30.7	13.9	45.2
35 COMMERCE, MANAGEMENT, TOURISM AND SERVICES	64.6	26.5	41.0
36 POLICY AND POLITICAL SCIENCE	14.0	6.0	43.0
37 STUDIES IN HUMAN SOCIETY	63.9	28.6	44.7
38 BEHAVIORAL AND COGNITIVE SCIENCES	22.1	11.6	52.7
39 LAW, JUSTICE AND LAW ENFORCEMENT	23.2	13.8	59.5
40 JOURNALISM, LIBRARIANSHIP AND CURATORIAL STUDIES	9.6	7.0	72.8
41 THE ARTS	6.2	2.6	41.9
42 LANGUAGE AND CULTURE	5.0	2.7	54.0
43 HISTORY AND ARCHAEOLOGY	8.9	4.5	50.6
44 PHILOSOPHY AND RELIGION	2.7	0.6	22.6
TOTAL	1085	484	44.6

(a) Applications are classified by applicants to up to three RFCD Classification codes by percentage

Strategic Partnerships with Industry - Research and Training Scheme
Applications for funding to commence in 2001

Table 7. Funded projects by Socio-Economic Objective (SEO) Classification – (Division Level) ^(a)

<i>Classification</i>	<i>Total Applications Received</i>	<i>Funded</i>	<i>Success Rate %</i>
61 DEFENCE	2.0	1.0	47.7
62 PLANT PRODUCTION AND PLANT PRIMARY PRODUCTS	74.3	26.4	35.6
63 ANIMAL PRODUCTION AND ANIMAL PRIMARY PRODUCTS	38.6	14.5	37.6
64 MINERAL RESOURCES (EXCL. ENERGY)	29.1	17.3	59.5
65 ENERGY RESOURCES	15.0	8.0	53.2
66 ENERGY SUPPLY	25.6	12.1	47.1
67 MANUFACTURING	164.2	75.8	46.1
68 CONSTRUCTION	39.1	14.2	36.2
69 TRANSPORT	14.1	2.9	20.6
70 INFORMATION AND COMMUNICATION SERVICES	80.8	45.8	56.7
71 COMMERCIAL SERVICES AND TOURISM	34.9	13.8	39.4
72 ECONOMIC FRAMEWORK	58.4	27.5	47.1
73 HEALTH	115.1	38.6	33.6
74 EDUCATION AND TRAINING	57.6	21.3	37.0
75 SOCIAL DEVELOPMENT AND COMMUNITY SERVICES	147.9	70.1	47.4
76 ENVIRONMENTAL POLICY FRAMEWORKS AND OTHER ASPECTS	22.2	10.1	45.5
77 ENVIRONMENTAL MANAGEMENT	125.8	58.9	46.8
78 NON-ORIENTED RESEARCH	40.5	25.9	64.1
TOTAL	1085	484	44.6

(a) Applications are classified by applicants to up to three SEO Classification codes by percentage

Strategic Partnerships with Industry - Research and Training Scheme
Applications for funding to commence in 2001

Table 8. Age and gender of applicant investigators^(a) by application status

Female

	<i>Age Cohort</i>	<i>Other</i>	<i>20:24</i>	<i>25:29</i>	<i>30:34</i>	<i>35:39</i>	<i>40:44</i>	<i>45:49</i>	<i>50:54</i>	<i>55:59</i>	<i>60:64</i>	<i>65:69</i>	<i>70:74</i>	<i>75:79</i>	<i>Total</i>
Total		7		30	57	99	129	150	115	46	11	1			645
Not Funded		4		18	34	50	75	101	72	22	6	1			383
Funded		3		12	23	49	54	49	43	24	5	0			262
Success Rate %		42.9		40.0	40.4	49.5	41.9	32.7	37.4	52.2	45.5	0.0			40.6

Male

	<i>Age Cohort</i>	<i>Other</i>	<i>20:24</i>	<i>25:29</i>	<i>30:34</i>	<i>35:39</i>	<i>40:44</i>	<i>45:49</i>	<i>50:54</i>	<i>55:59</i>	<i>60:64</i>	<i>65:69</i>	<i>70:74</i>	<i>75:79</i>	<i>Total</i>
Total		15	3	50	174	347	398	430	391	233	78	16	3		2138
Not Funded		10	3	23	85	181	202	234	240	135	46	8	3		1170
Funded		5	0	27	89	166	196	196	151	98	32	8	0		968
Success Rate %		33.3	0.0	54.0	51.1	47.8	49.2	45.6	38.6	42.1	41.0	50.0	0.0		45.3

Overall

	<i>Age Cohort</i>	<i>Other</i>	<i>20:24</i>	<i>25:29</i>	<i>30:34</i>	<i>35:39</i>	<i>40:44</i>	<i>45:49</i>	<i>50:54</i>	<i>55:59</i>	<i>60:64</i>	<i>65:69</i>	<i>70:74</i>	<i>75:79</i>	<i>Total</i>
Total		22	3	80	231	446	527	580	506	279	89	17	3		2783
Not Funded		14	3	41	119	231	277	335	312	157	52	9	3		1553
Funded		8	0	39	112	215	250	245	194	122	37	8	0		1230
Success Rate %		36.4	0.0	48.8	48.5	48.2	47.4	42.2	38.3	43.7	41.6	47.1	0.0		44.2

(a) All named participants except Associate Investigators

Strategic Partnerships with Industry - Research and Training Scheme
Applications for funding to commence in 2000

Table 9. Success rate of applicant investigators^(a) by gender and UIRCC Panel

Panel	Female			Male			Overall		
	All	Fund	Percent	All	Fund	Percent	All	Fund	Percent
C1 Information, Technology and Mathematical Sciences	42	19	45.2%	275	126	45.8%	317	145	45.7%
C2 Biological, Medical and Rural Sciences	239	82	34.3%	644	270	41.9%	883	352	39.9%
C3 Engineering and Earth Sciences	41	13	31.7%	387	190	49.1%	428	203	47.4%
C4 Social Sciences and Humanities	288	126	43.8%	499	219	43.9%	787	345	43.8%
C5 Physical Sciences and Chemical Sciences	35	22	62.9%	333	163	48.9%	368	185	50.3%
Total SPIRT	645	262	40.6%	2138	968	45.3%	2783	1230	44.2%

(a) All named participants except Associate Investigators

Strategic Partnerships with Industry - Research and Training Scheme
Applications for funding to commence in 2001

Table 10. Number of application assessments by the assessor's organisation

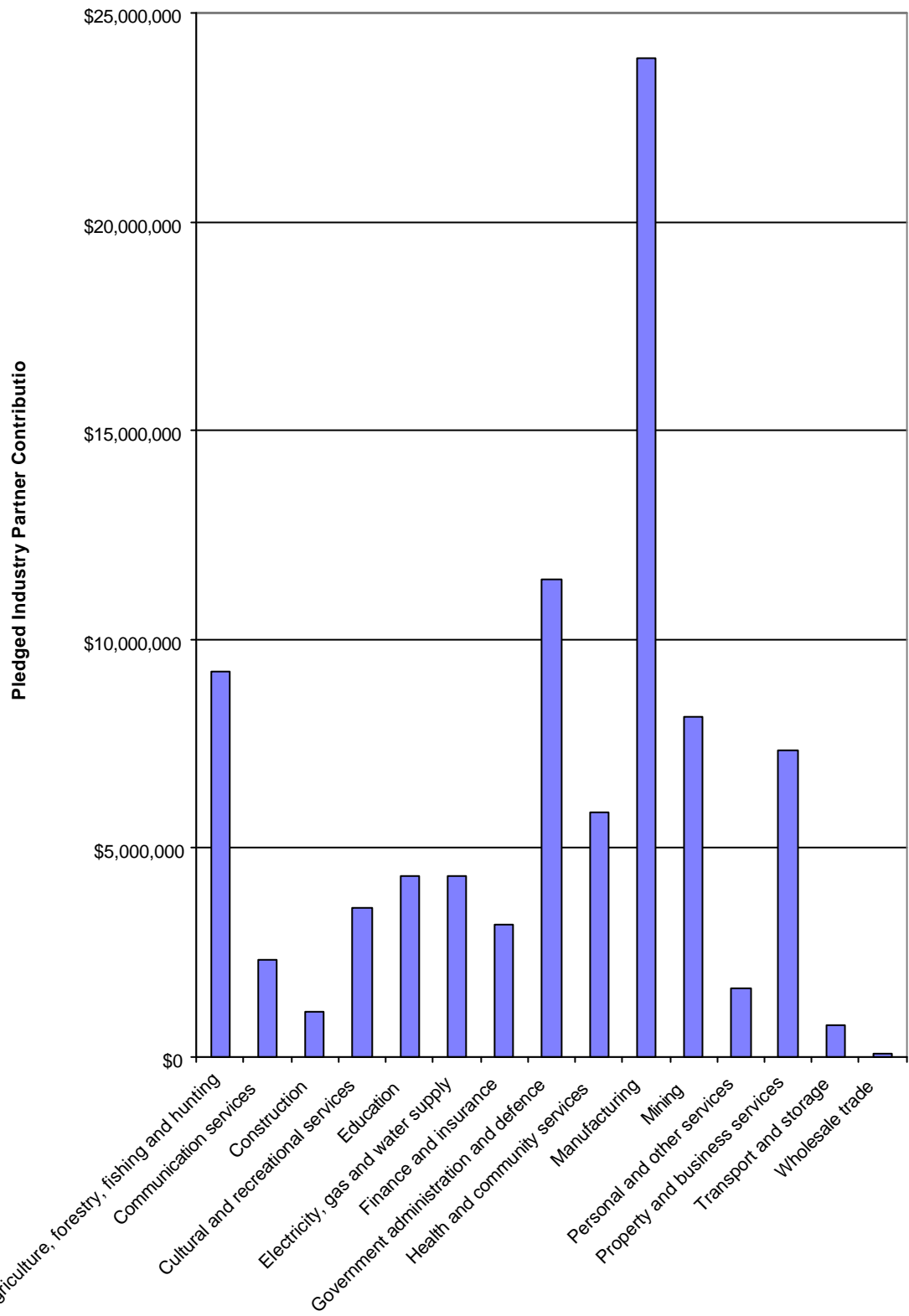
Organisation	Assignments	Replies	Rejections	Assessments	Assess Rate %
Australian Catholic University	3	3	0	3	100.0
Charles Sturt University	12	12	4	8	66.7
Southern Cross University	13	12	2	10	76.9
Macquarie University	33	29	5	24	72.7
The University of New England	37	37	9	28	75.7
The University of New South Wales	142	124	24	100	70.4
The University of Newcastle	42	42	6	36	85.7
The University of Sydney	112	96	18	78	69.6
University of Technology, Sydney	46	43	7	36	78.3
University of Western Sydney	68	57	10	47	69.1
University of Wollongong	51	48	8	40	78.4
University of Ballarat	2	2	0	2	100.0
Deakin University	43	43	8	35	81.4
La Trobe University	44	42	13	29	65.9
Monash University	90	86	28	58	64.4
RMIT University	41	37	7	30	73.2
Swinburne University of Technology	22	20	1	19	86.4
The University of Melbourne	145	132	31	101	69.7
Victoria University	24	23	2	21	87.5
Griffith University	48	46	14	32	66.7
James Cook University	20	20	1	19	95.0
Queensland University of Technology	68	66	18	48	70.6
Central Queensland University	8	8	2	6	75.0
University of Southern Queensland	8	8	1	7	87.5
The University of Queensland	145	137	34	103	71.0
Curtin University of Technology	64	63	14	49	76.6
Edith Cowan University	19	18	4	14	73.7
Murdoch University	21	15	5	10	47.6
The University of Western Australia	81	75	17	58	71.6
The Flinders University of South Australia	32	28	7	21	65.6
The University of Adelaide	71	62	21	41	57.7
University of South Australia	44	40	6	34	77.3
University of Tasmania	36	33	10	23	63.9
Northern Territory University	7	6	1	5	71.4
The Australian National University	67	61	20	41	61.2
University of Canberra	18	14	3	11	61.1
Bond University	3	3	3	0	0.0
Total All Universities	1730	1591	364	1227	70.9
OTHER organisational assessors	949	794	288	506	53.3
Total	2679	2385	652	1733	64.7

Strategic Partnerships with Industry - Research and Training Scheme
Applications for funding to commence in 2001

Table 11. Number of Industry Partners and pledged contributions by industry type (2001-2003)

ANZSIC (Division)	All Applications		Funded Applications			
	Number of Industry Partners	Total contribution	Number of Industry Partners	Industry Partner pledged cash contribution	Industry Partner pledged in-kind contribution	Total pledged contribution
Agriculture, forestry, fishing and hunting	231	\$27,489,619	83	\$2,698,045	\$6,519,156	\$9,217,201
Communication services	39	\$3,897,305	25	\$896,106	\$1,408,032	\$2,304,138
Construction	33	\$3,068,640	13	\$323,000	\$734,200	\$1,057,200
Cultural and recreational services	67	\$6,288,506	38	\$854,721	\$2,691,331	\$3,546,052
Education	87	\$9,571,051	35	\$1,433,519	\$2,874,801	\$4,308,320
Electricity, gas and water supply	89	\$8,098,257	43	\$1,517,397	\$2,798,192	\$4,315,589
Finance and insurance	34	\$5,341,758	17	\$927,753	\$2,217,746	\$3,145,499
Government administration and defence	274	\$26,712,142	127	\$3,866,928	\$7,545,380	\$11,412,308
Health and community services	214	\$17,925,539	79	\$2,370,582	\$3,459,903	\$5,830,485
Manufacturing	294	\$45,552,622	125	\$6,162,494	\$17,751,387	\$23,913,881
Mining	80	\$13,600,430	40	\$3,440,763	\$4,687,439	\$8,128,202
Personal and other services	42	\$3,151,743	17	\$374,623	\$1,257,816	\$1,632,439
Property and business services	121	\$14,273,023	56	\$2,011,682	\$5,314,872	\$7,326,554
Transport and storage	22	\$2,335,439	4	\$136,300	\$592,700	\$729,000
Wholesale trade	7	\$421,000	1	\$15,000	\$30,000	\$45,000
Total	1634	\$187,727,074	703	\$27,028,913	\$59,882,955	\$86,911,868

Figure 2: Pledged Contributions for Funded Applications by Industry Partner Classification



Strategic Partnerships with Industry - Research and Training Scheme
Applications for funding to commence in 2001

Table 12. Success rate of project and training components by UIRCC Panel

Panel	Component	Number Sought	Number Funded	Success rate	Total Recommended Funding (\$)	In-Cash Contribution (\$)	In-Kind Contribution (\$)	Total Industry Partner Contribution (\$)
C1	APAI	48	20	41.7%	\$1,226,060			
	APAL_IT	83	41	49.4%	\$2,697,332			
	APDI	2	1	50.0%	\$159,924			
	CRG	69	26	37.7%	\$4,015,174			
C1 Total		202	88	43.6%	\$8,098,490	\$3,408,546	\$7,068,671	\$10,477,217
C2	APAI	237	94	39.7%	\$6,152,592			
	APAL_IT		1		\$66,876			
	APDI	26	12	46.2%	\$1,874,832			
	CRG	176	62	35.2%	\$8,323,485			
C2 Total		439	169	38.5%	\$16,417,785	\$6,464,444	\$14,951,807	\$21,416,251
C3	APAI	155	68	43.9%	\$4,480,692			
	APAL_IT	3	2	66.7%	\$133,752			
	APDI	12	3	25.0%	\$468,708			
	CRG	97	41	42.3%	\$5,087,260			
C3 Total		267	114	42.7%	\$10,170,412	\$5,167,756	\$10,243,942	\$15,411,698
C4	APAI	158	65	41.1%	\$4,235,480			
	APAL_IT	10	5	50.0%	\$334,380			
	APDI	12	7	58.3%	\$1,045,260			
	CRG	198	79	39.9%	\$8,197,876			
	TR		1		\$42,000			
C4 Total		378	157	41.5%	\$13,854,996	\$7,060,190	\$14,245,393	\$21,305,583
C5	APAI	125	53	42.4%	\$3,544,428			
	APAL_IT	3	1	33.3%	\$66,876			
	APDI	7	4	57.1%	\$624,944			
	CRG	90	36	40.0%	\$5,512,211			
C5 Total		225	94	41.8%	\$9,748,459	\$4,927,977	\$13,373,142	\$18,301,119
Total SPIRT	APAI	723	300	41.5%	\$19,639,252			
	APAL_IT	99	50	50.5%	\$3,299,216			
	APDI	59	27	45.8%	\$4,173,668			
	CRG	630	244	38.7%	\$31,136,006			
	TR		1		\$42,000			
Grand Total		1511	622	41.2%	\$58,290,142	\$27,028,913	\$59,882,955	\$86,911,868

Strategic Partnerships with Industry - Research and Training Scheme
Applications for funding to commence in 2001

Table 13. Number of funded project and training components by Institution

Institution	Total applications received	Total applications funded	Project funding sought	Project funding awarded	APAIs sought	APAIs awarded	APDIs sought	APDIs awarded
Australian Catholic University	11	5	2		9	5		
Charles Sturt University	20	10	9	2	16	8	1	1
Macquarie University	14	5	10	3	5	2	2	
Southern Cross University	13	5	3	2	12	4		
The University of New England	17	7	10	4	7	2	3	2
The University of New South Wales	94	52	54	26	71	37	3	
The University of Newcastle	28	13	17	4	24	12	3	
The University of Sydney	57	31	38	19	34	18	11	9
University of Technology, Sydney	26	11	18	8	20	8	1	
University of Western Sydney	41	13	34	8	18	7	1	
University of Wollongong	40	27	20	13	34	25	3	1
Deakin University	46	24	8	6	43	21	1	1
La Trobe University	22	4	10		18	4	2	
Monash University	54	19	36	9	45	13	1	1
RMIT University	33	11	20	7	28	5		
Swinburne University of Technology	20	8	8	6	14	3		
The University of Melbourne	89	44	57	27	74	33	5	2
University of Ballarat	22	11	1	1	24	13		
Victoria University	18	5	3	1	18	4		
Central Queensland University	7	2	3	1	6	1	1	
Griffith University	29	13	19	7	17	9	1	1
James Cook University	14	8	6	4	14	9		
Queensland University of Technology	56	20	35	10	40	14	1	1
The University of Queensland	75	25	56	18	54	14	1	
University of Southern Queensland	5	3	2	1	4	3		
University of the Sunshine Coast	2	2			2	2		
The Flinders University of South Australia	12	7	5	2	9	5	1	
The University of Adelaide	31	14	19	7	23	11	2	
University of South Australia	36	14	27	10	23	7	2	1
Curtin University of Technology	21	7	17	4	21	7	1	1
Edith Cowan University	20	7	9	3	14	4		
Murdoch University	22	11	17	7	14	6	2	
The University of Western Australia	30	19	21	9	20	13	1	1
University of Tasmania	43	21	22	11	38	18	8	4
Australian Maritime College	2		2		1			
Northern Territory University	3	1	2	1	2	1		
University of Canberra	6	1	6	1	2			
The Australian National University	6	4	4	2	4	2	1	1
Total	1085	484	630	244	822	350	59	27

Strategic Partnerships with Industry - Research and Training Scheme
Applications for funding to commence in 2001

Table 14. Pledged Industry Partner and Commonwealth contribution by Institution

Institution	Industry Partner CASH contribution pledged for ALL SPIRT applications	Industry Partner IN-KIND contribution pledged for ALL SPIRT applications	TOTAL Industry Partner contribution pledged for ALL SPIRT applications	Industry Partner CASH contribution pledged to funded applications	Industry Partner IN-KIND contribution pledged to funded applications	TOTAL Industry Partner contribution pledged to funded applications	Total Commonwealth allocation
Australian Catholic University	\$258,218	\$483,727	\$741,945	\$70,000	\$174,800	\$244,800	\$312,088
Charles Sturt University	\$640,280	\$1,669,186	\$2,309,466	\$266,320	\$621,050	\$887,370	\$793,008
Macquarie University	\$833,731	\$1,970,731	\$2,804,462	\$264,000	\$1,045,220	\$1,309,220	\$835,752
Southern Cross University	\$575,082	\$1,114,495	\$1,689,577	\$326,727	\$626,774	\$953,501	\$663,348
The University of New England	\$931,306	\$2,077,521	\$3,008,827	\$433,605	\$1,026,043	\$1,459,648	\$885,506
The University of New South Wales	\$5,123,639	\$12,243,850	\$17,367,489	\$2,981,138	\$6,780,907	\$9,762,045	\$6,121,163
The University of Newcastle	\$1,357,815	\$2,779,636	\$4,137,451	\$529,782	\$977,400	\$1,507,182	\$1,134,142
The University of Sydney	\$3,234,031	\$10,981,974	\$14,216,005	\$1,838,538	\$5,859,986	\$7,698,524	\$5,394,691
University of Technology, Sydney	\$1,417,474	\$3,959,047	\$5,376,521	\$667,474	\$1,238,027	\$1,905,501	\$1,492,696
University of Western Sydney	\$2,173,061	\$4,599,539	\$6,772,600	\$693,827	\$1,328,599	\$2,022,426	\$1,556,236
University of Wollongong	\$2,159,273	\$4,244,455	\$6,403,728	\$1,544,323	\$2,809,586	\$4,353,909	\$3,635,386
Deakin University	\$1,219,298	\$2,373,549	\$3,592,847	\$813,510	\$1,702,714	\$2,516,224	\$2,370,592
La Trobe University	\$1,066,555	\$3,487,287	\$4,553,842	\$65,000	\$239,700	\$304,700	\$267,504
Monash University	\$3,040,750	\$6,999,932	\$10,040,682	\$1,399,123	\$2,579,531	\$3,978,654	\$2,103,632
RMIT University	\$1,350,776	\$4,196,059	\$5,546,835	\$471,233	\$1,598,274	\$2,069,507	\$1,149,668
Swinburne University of Technology	\$650,500	\$1,754,901	\$2,405,401	\$375,500	\$924,241	\$1,299,741	\$1,068,488
The University of Melbourne	\$4,654,812	\$9,760,543	\$14,415,355	\$2,547,627	\$4,948,657	\$7,496,284	\$5,959,315
University of Ballarat	\$603,074	\$660,335	\$1,263,409	\$429,074	\$396,500	\$825,574	\$889,260
Victoria University	\$454,100	\$929,047	\$1,383,147	\$92,500	\$260,000	\$352,500	\$328,072
Central Queensland University	\$242,000	\$763,456	\$1,005,456	\$38,000	\$90,500	\$128,500	\$152,876
Griffith University	\$1,548,285	\$2,600,878	\$4,149,163	\$989,094	\$975,282	\$1,964,376	\$1,583,033
James Cook University	\$484,214	\$1,683,366	\$2,167,580	\$258,494	\$931,900	\$1,190,394	\$1,011,836
Queensland University of Technology	\$2,295,406	\$7,376,818	\$9,672,224	\$680,955	\$2,616,457	\$3,297,412	\$2,109,428
The University of Queensland	\$4,682,462	\$14,588,869	\$19,271,331	\$1,775,280	\$4,324,771	\$6,100,051	\$3,308,140
University of Southern Queensland	\$179,000	\$476,060	\$655,060	\$149,000	\$398,660	\$547,660	\$299,612
University of the Sunshine Coast	\$50,000	\$51,951	\$101,951	\$50,000	\$51,951	\$101,951	\$111,460
The Flinders University of South Australia	\$706,505	\$481,412	\$1,187,917	\$356,000	\$266,712	\$622,712	\$591,516
The University of Adelaide	\$1,611,765	\$3,120,670	\$4,732,435	\$664,200	\$1,108,803	\$1,773,003	\$1,677,464
University of South Australia	\$2,928,071	\$9,304,367	\$12,232,438	\$1,546,382	\$6,252,229	\$7,798,611	\$1,956,755
Curtin University of Technology	\$1,232,023	\$2,369,950	\$3,601,973	\$702,567	\$1,181,492	\$1,884,059	\$1,172,670
Edith Cowan University	\$578,026	\$1,105,395	\$1,683,421	\$277,050	\$460,888	\$737,938	\$551,640
Murdoch University	\$1,164,746	\$2,237,322	\$3,402,068	\$512,061	\$865,892	\$1,377,953	\$947,116
The University of Western Australia	\$1,683,998	\$4,041,974	\$5,725,972	\$983,654	\$2,263,138	\$3,246,792	\$2,240,659
University of Tasmania	\$2,523,150	\$4,310,136	\$6,833,286	\$1,625,875	\$2,359,221	\$3,985,096	\$2,689,902
Australian Maritime College	\$90,000	\$397,000	\$487,000				
Northern Territory University	\$91,000	\$226,215	\$317,215	\$26,500	\$66,150	\$92,650	\$76,876
University of Canberra	\$557,090	\$625,752	\$1,182,842	\$285,000	\$72,000	\$357,000	\$235,000
The Australian National University	\$500,253	\$787,900	\$1,288,153	\$299,500	\$458,900	\$758,400	\$613,612
Total	\$54,891,769	\$132,835,305	\$187,727,074	\$27,028,913	\$59,882,955	\$86,911,868	\$58,290,142

Strategic Partnerships with Industry - Research and Training Scheme
 Applications for funding to commence in 2001

Table 15. Application and component success rate by year (1998-2001)

Year	Applications sought	Applications awarded	Application success rate	Components sought			Components awarded			Component success rate		
	Total	Total	Total	APAIs	APDIs	CRGs	APAIs	APDIs	CRGs	APAIs	APDIs	CRGs
1998	745	340	45.6%	460	55	503	232	22	204	50.4%	40.0%	40.6%
1999	875	406	46.4%	634	63	498	288	29	187	45.4%	46.0%	37.6%
2000	982	440	44.8%	748	46	585	334	17	224	44.7%	37.0%	38.3%
2001	1085	484	44.6%	822	59	630	350	27	244	42.5%	45.8%	38.6%

Figure 3: Submitted and Funded Applications for SPIRT Grants (1998-2001)

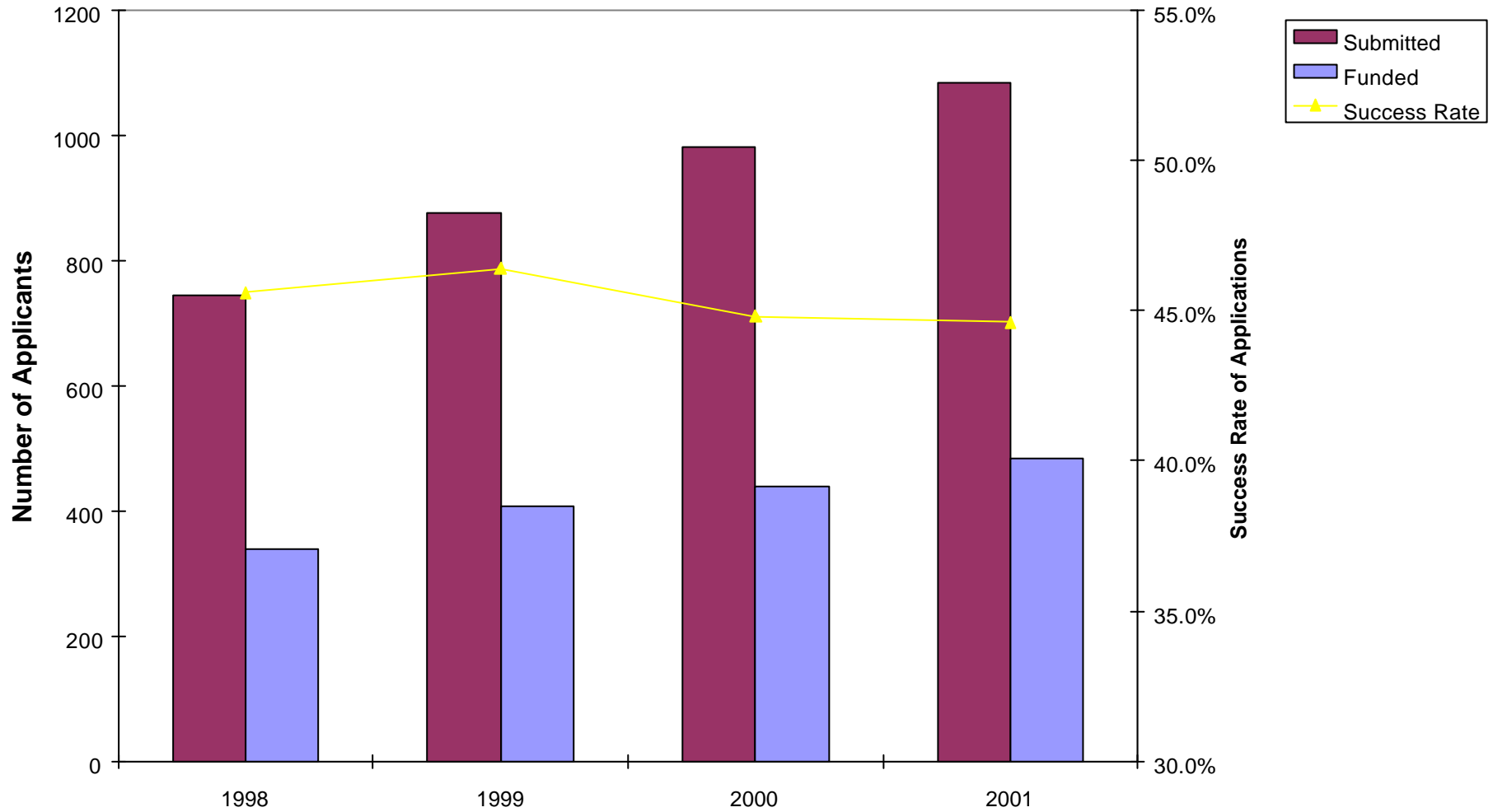


Figure 4: Funded Components of SPIRT Grants (1998-2001)

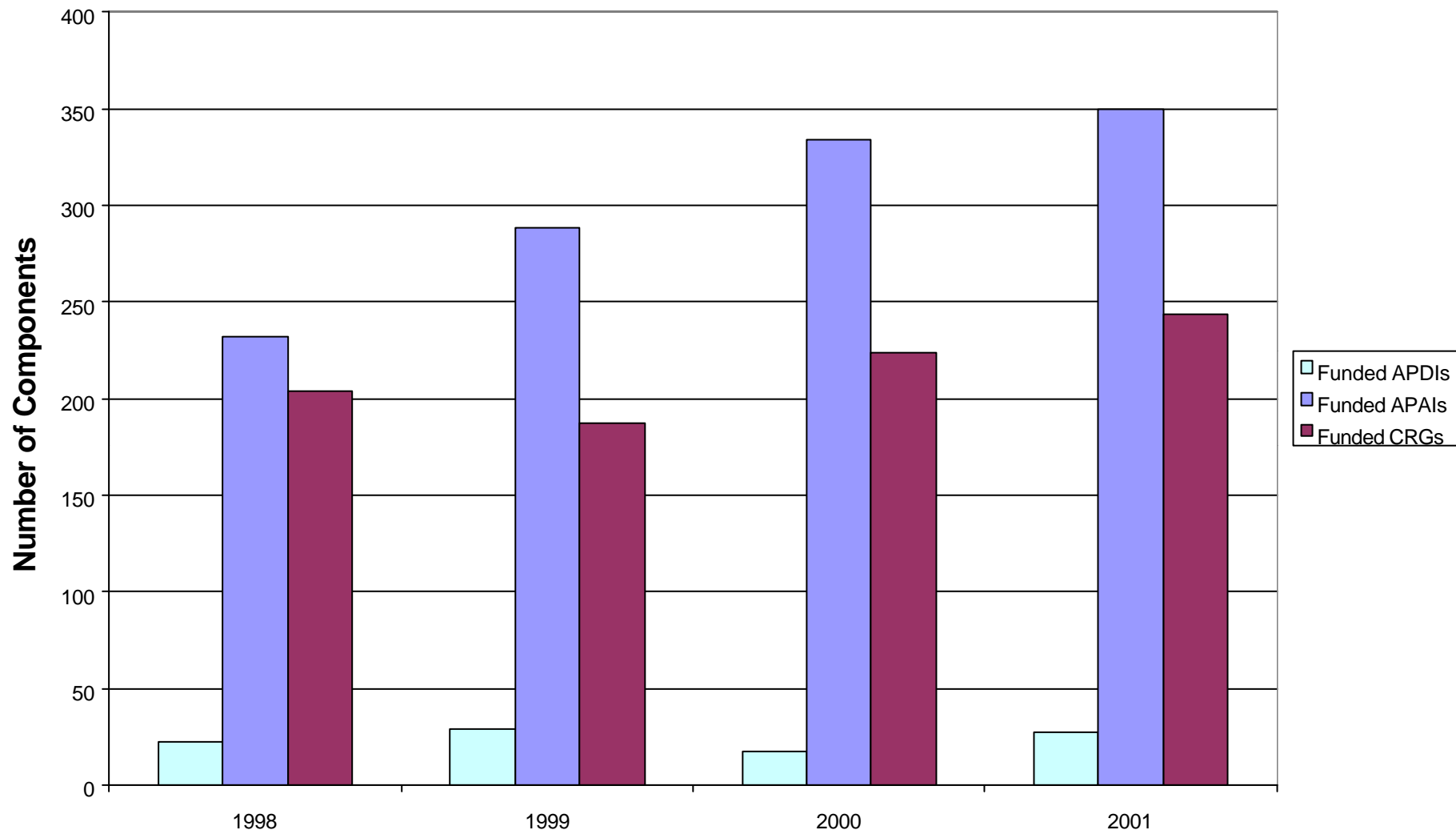


Figure 5: Success Rates of Funded Components of SPIRT Grants (1998-2001)

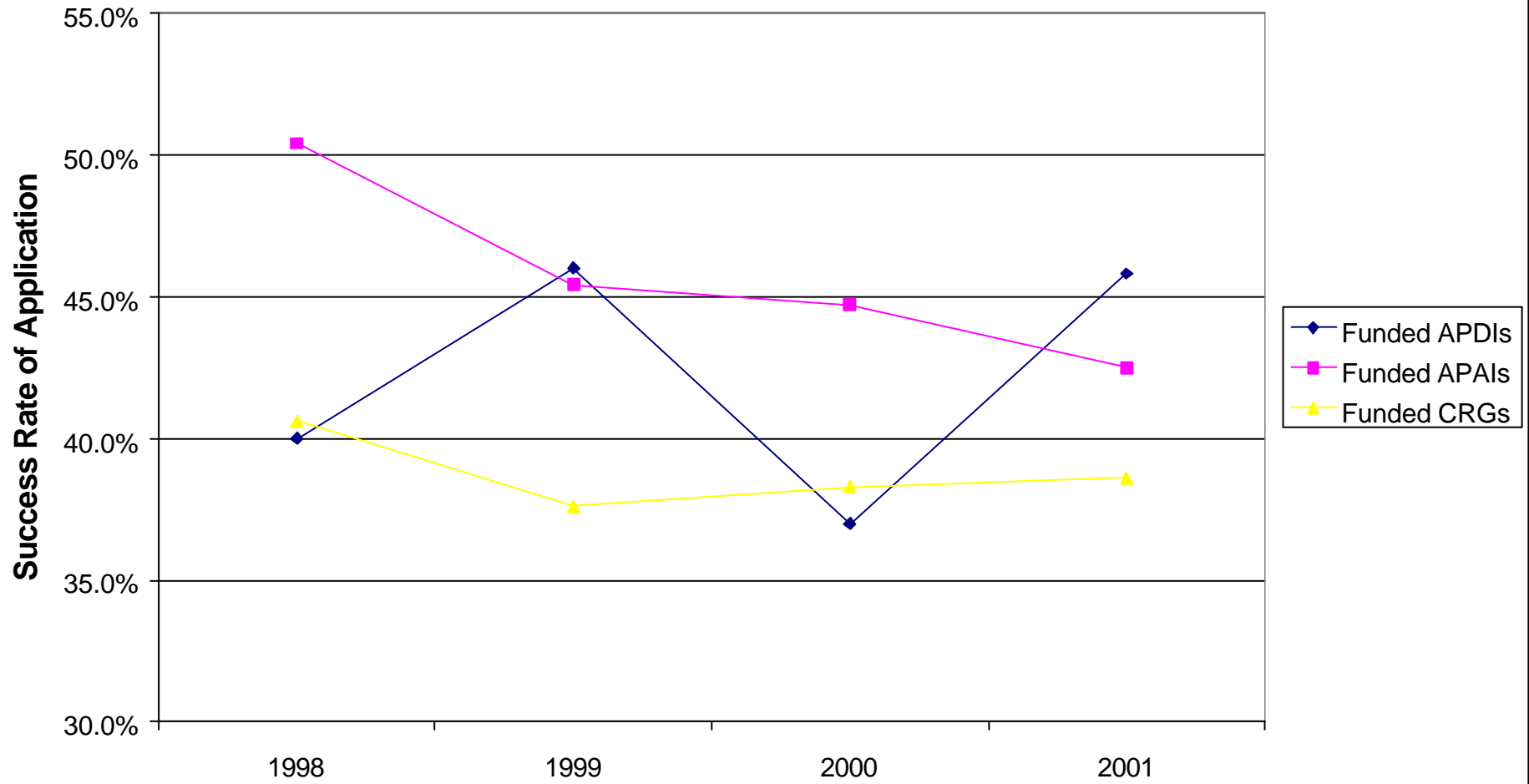


Table 16. Incidence of International Collaboration

Collaborating Country	Total Projects	Funded	%
Belgium	2	0	0.0
Brazil	2	2	100.0
Canada	14	8	57.1
Chile	1	1	100.0
China, People's Republic	8	4	50.0
Colombia	1	0	0.0
Finland	2	0	0.0
France	8	6	75.0
Germany	13	9	69.2
Hong Kong	3	2	66.7
India	1	1	100.0
Indonesia	2	1	50.0
Ireland, Republic of	2	2	100.0
Israel	1	0	0.0
Italy	2	1	50.0
Japan	9	4	44.4
Korea, Republic of	3	0	0.0
Madagascar	1	1	100.0
Malaysia	2	0	0.0
Mexico	1	1	100.0
Netherlands, The	2	1	50.0
New Zealand	12	7	58.3
Peru	1	1	100.0
Philippines, The	2	0	0.0
Russian Federation, The	1	1	100.0
South Africa	5	3	60.0
Spain	1	1	100.0
Sweden	3	1	33.3
Switzerland	4	1	25.0
Taiwan	1	0	0.0
Thailand	2	1	50.0
Ukraine	1	1	100.0
United Kingdom	25	11	44.0
United States	67	38	56.7
UNSPECIFIED	2	1	50.0
Vietnam	1	0	0.0
Zambia	1	1	100.0
SPIRT Total	209	112	53.6